

MINERAL PATENTS
JACKSON
MINING DISTRICT

6-39 R 39 E Section 24

R 40 E

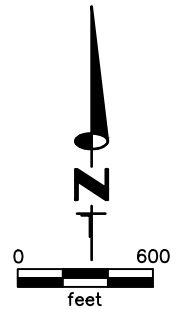
6-40 →

T 15 N

← 6-39

ACREAGE NOTE:
GROSS ACREAGES WERE OBTAINED FROM
THE MINERAL SURVEY INFORMATION, WHERE
PRESENT. FOR CLAIMS THAT OVERLAP, NET
ACREAGE WAS DETERMINED BY CAD
MEASUREMENTS. CLAIMS WERE CONSIDERED
IN CHRONOLOGICAL ORDER OF LOCATION.

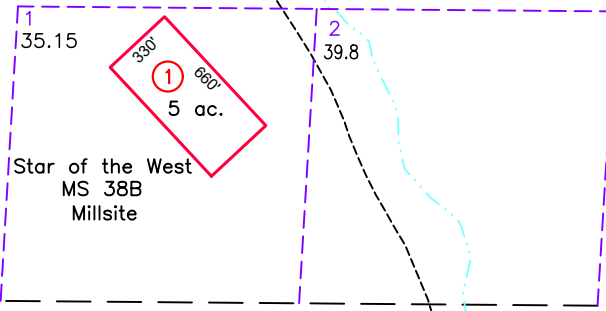
NOTE:
THIS PLAT IS FOR ASSESSMENT USE ONLY,
AND DOES NOT REPRESENT A SURVEY. NO
LIABILITY IS ASSUMED AS TO THE ACCURACY
OF THE DATA DELINEATED HEREON. USE OF
THIS PLAT FOR OTHER THAN ASSESSMENT
PURPOSES IS FORBIDDEN UNLESS APPROVED
BY THE DEPARTMENT OF TAXATION, DIVISION
OF ASSESSMENT STANDARDS.



M.D.B. & M.

LANDER COUNTY

639004



6-39 13-34

23 24
26 25

19
30

24
25