

R 43 E Section 27

6-19

21 22
28 27

22 23
27 26

6-19

T 17 N

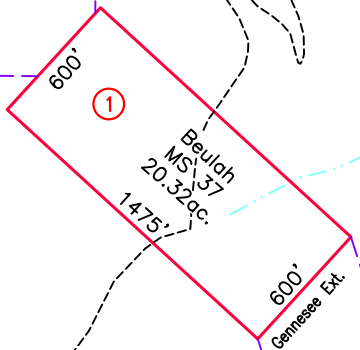
6-19

619001

2
39.19

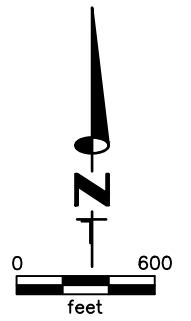
1
49.61

3
45.70



ACREAGE NOTE:
GROSS ACREAGES WERE OBTAINED FROM THE MINERAL SURVEY INFORMATION, WHERE PRESENT. FOR CLAIMS THAT OVERLAP, NET ACREAGE WAS DETERMINED BY CAD MEASUREMENTS. CLAIMS WERE CONSIDERED IN CHRONOLOGICAL ORDER OF LOCATION.

NOTE:
THIS PLAT IS FOR ASSESSMENT USE ONLY, AND DOES NOT REPRESENT A SURVEY. NO LIABILITY IS ASSUMED AS TO THE ACCURACY OF THE DATA DELINEATED HEREON. USE OF THIS PLAT FOR OTHER THAN ASSESSMENT PURPOSES IS FORBIDDEN UNLESS APPROVED BY THE DEPARTMENT OF TAXATION, DIVISION OF ASSESSMENT STANDARDS.



M.D.B. & M.

LANDER COUNTY

28 27
33 34

27 26
34 35

6-19 13-28