

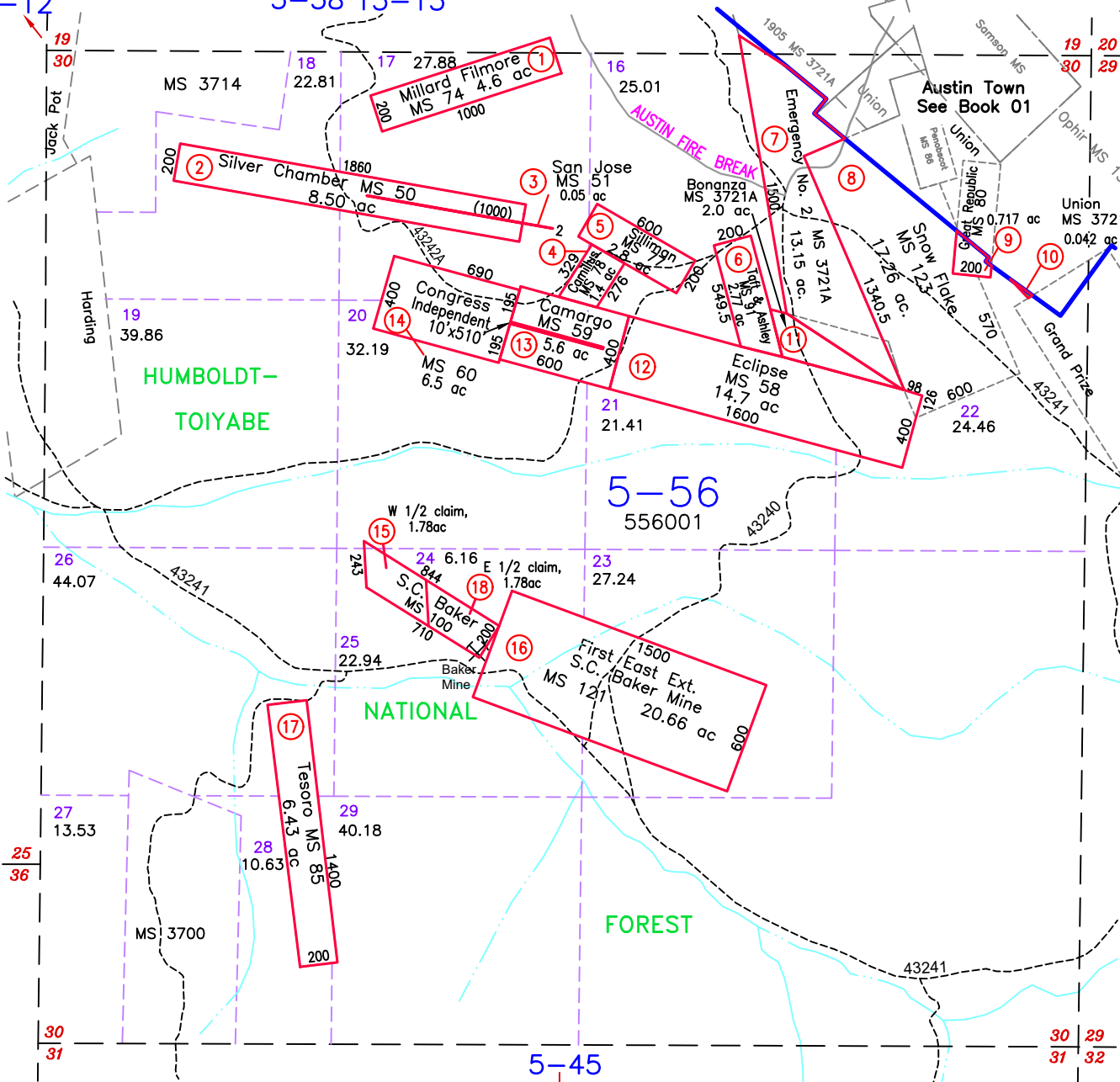
# MINERAL PATENTS REESE RIVER MINING DISTRICT

R 43 E  
13-12

5-58 13-13 R 44 E

Section 30

13-14



**CLAIM NOTE:**  
THERE ARE DISCREPANCIES IN THE CLAIM LOCATIONS FROM SEVERAL OF THE MINERAL SURVEYS AND ALSO THE BLM LANDBASE FOR CLAIMS TESORO, S.C.BAKER, AND 1ST EAST EXT. S.C.BAKER. THESE CLAIMS ARE USING THE BLM LOCATION. FOR EXACT LOCATIONS REFER TO THE CLAIM MONUMENTS ON THE GROUND.

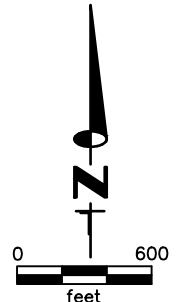
5-57 →  
13-17

T 19 N

**ACREAGE NOTE:**  
GROSS ACREAGES WERE OBTAINED FROM THE MINERAL SURVEY INFORMATION, WHERE PRESENT. FOR CLAIMS THAT OVERLAP, NET ACREAGE WAS DETERMINED BY CAD MEASUREMENTS. CLAIMS WERE CONSIDERED IN CHRONOLOGICAL ORDER OF LOCATION.

**NOTE:**  
THIS PLAT IS FOR ASSESSMENT USE ONLY, AND DOES NOT REPRESENT A SURVEY. NO LIABILITY IS ASSUMED AS TO THE ACCURACY OF THE DATA DELINEATED HEREON. USE OF THIS PLAT FOR OTHER THAN ASSESSMENT PURPOSES IS FORBIDDEN UNLESS APPROVED BY THE DEPARTMENT OF TAXATION, DIVISION OF ASSESSMENT STANDARDS.

← 5-44  
13-15



M.D.B. & M.

LANDER COUNTY