

R 43 E

13-06 5-53

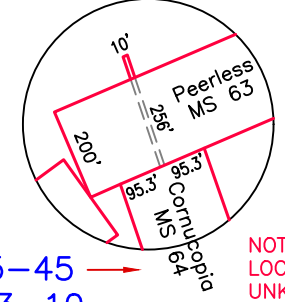
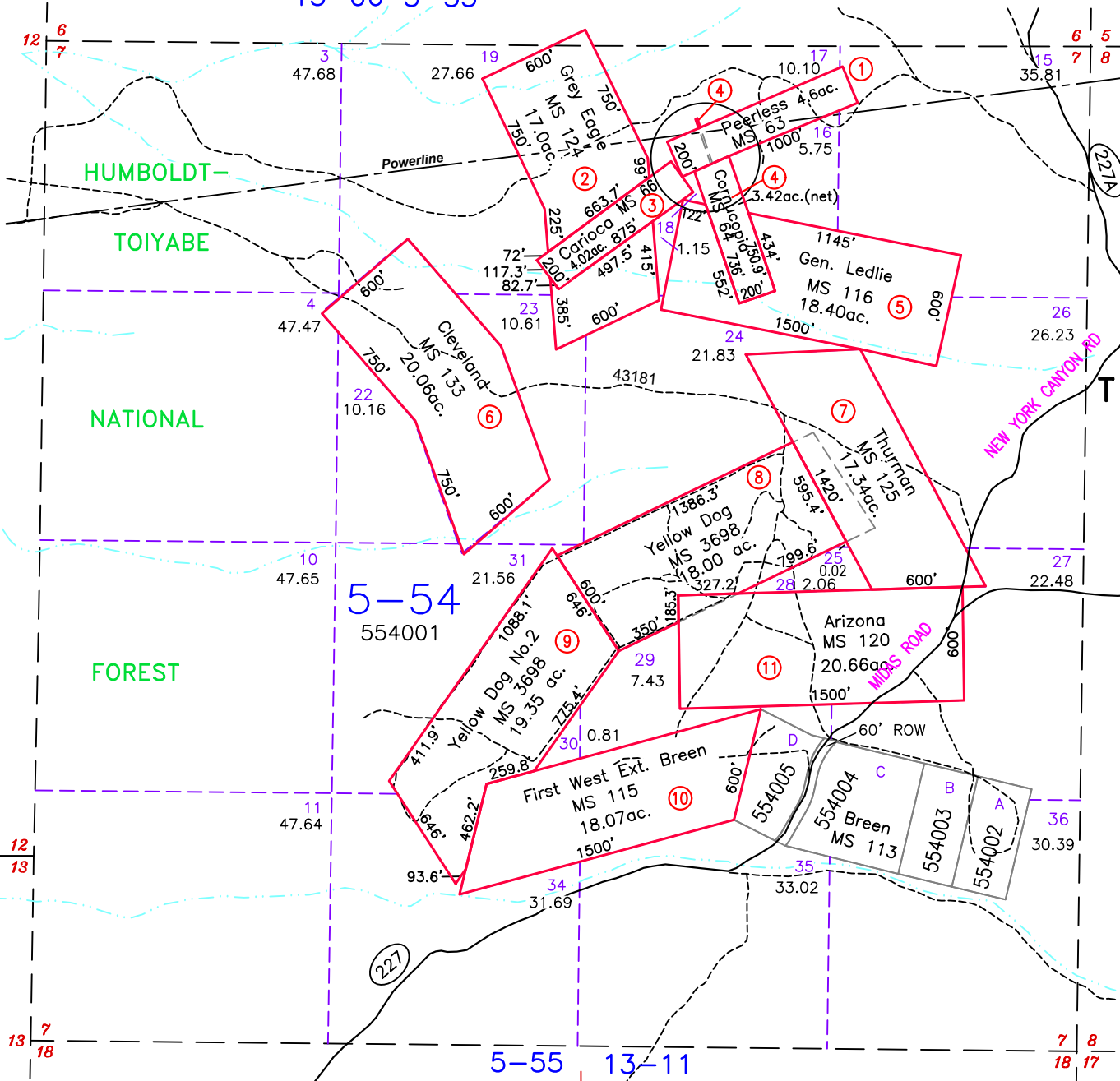
R 44 E

Section 7

13-07 MINERAL PATENTS

13-09

REESE RIVER  
MINING DISTRICT

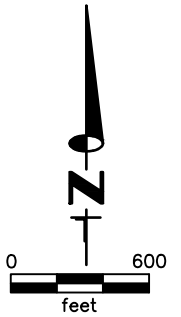


NOTE:  
LOCATION DATE  
UNKNOWN, MS 63 AND  
64 STAKED CLOSE TO  
THE SAME TIME

5-45  
13-10  
T 19 N

ACREAGE NOTE:  
GROSS ACREAGES WERE OBTAINED FROM THE  
MINERAL SURVEY INFORMATION, WHERE  
PRESENT. FOR CLAIMS THAT OVERLAP, NET  
ACREAGE WAS DETERMINED BY CAD  
MEASUREMENTS. CLAIMS WERE CONSIDERED IN  
CHRONOLOGICAL ORDER OF LOCATION.

NOTE:  
THIS PLAT IS FOR ASSESSMENT USE ONLY,  
AND DOES NOT REPRESENT A SURVEY. NO  
LIABILITY IS ASSUMED AS TO THE ACCURACY  
OF THE DATA DELINEATED HEREON. USE OF  
THIS PLAT FOR OTHER THAN ASSESSMENT  
PURPOSES IS FORBIDDEN UNLESS APPROVED  
BY THE DEPARTMENT OF TAXATION, DIVISION  
OF ASSESSMENT STANDARDS.



M.D.B. & M.

LANDER COUNTY

REVIEWED, 10/20/22 NJW  
UPDATE ROADS, 07/06/20 NJW  
NEW MAP 10/15/18 NJW

5-44

5-54

5-55 13-11

7 8  
18 17