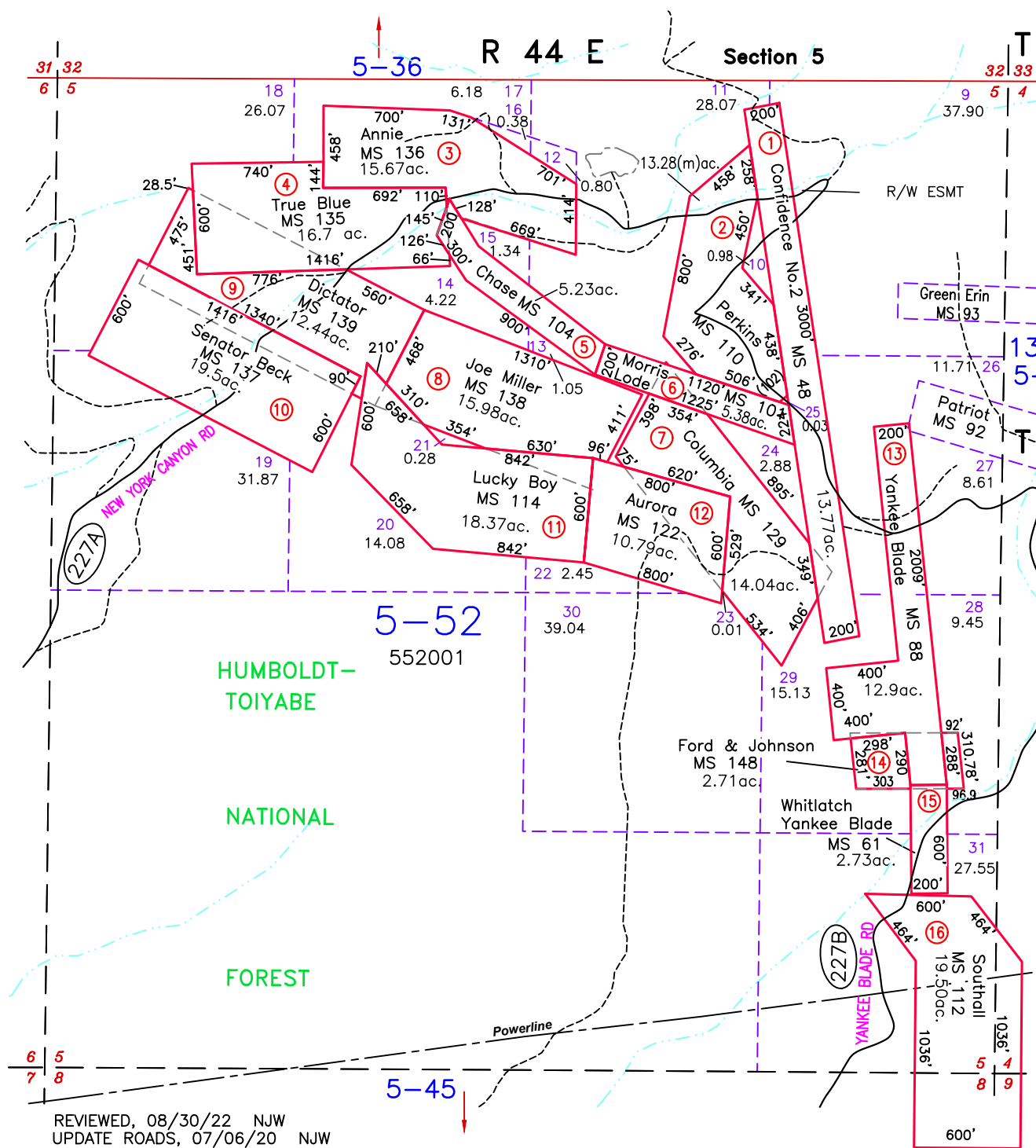


MINERAL PATENTS REESE RIVER MINING DISTRICT



R/W ESMT, DOC #118300, USFS, ACROSS CLAIMS

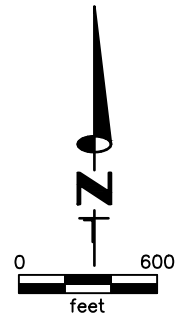
ACREAGE NOTE:
GROSS ACREAGES WERE OBTAINED FROM THE MINERAL SURVEY INFORMATION, WHERE PRESENT. FOR CLAIMS THAT OVERLAP, NET ACREAGE WAS DETERMINED BY CAD MEASUREMENTS. CLAIMS WERE CONSIDERED IN CHRONOLOGICAL ORDER OF LOCATION.

NOTE:
THIS PLAT IS FOR ASSESSMENT USE ONLY, AND DOES NOT REPRESENT A SURVEY. NO LIABILITY IS ASSUMED AS TO THE ACCURACY OF THE DATA DELINEATED HEREON. USE OF THIS PLAT FOR OTHER THAN ASSESSMENT PURPOSES IS FORBIDDEN UNLESS APPROVED BY THE DEPARTMENT OF TAXATION, DIVISION OF ASSESSMENT STANDARDS.

5-53
13-06

13-08
5-45

REVIEWED, 08/30/22 NJW
UPDATE ROADS, 07/06/20 NJW
NEW MAP 10/30/18 NJW



M.D.B. & M.

LANDER COUNTY