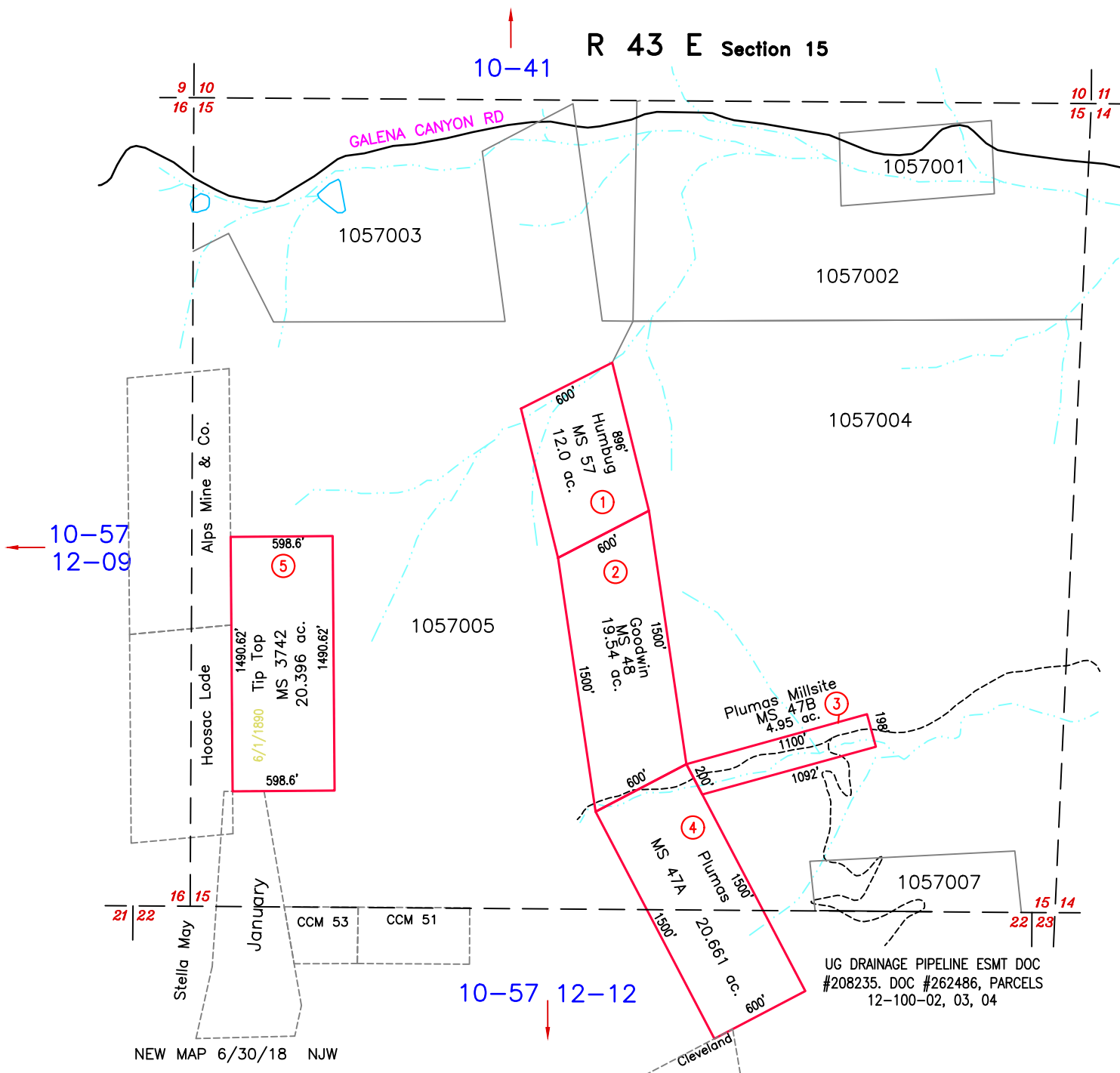


12-10  
 MINERAL PATENTS  
 BATTLE MOUNTAIN  
 MINING DISTRICT



10-42 →  
 10-41 →

← 10-57  
 12-09

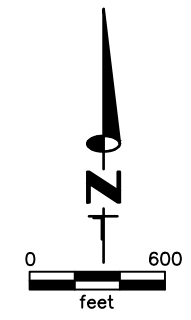
10-57 ↓  
 12-12

T 31 N

ACREAGE NOTE:  
 GROSS ACREAGES WERE OBTAINED FROM THE  
 MINERAL SURVEY INFORMATION, WHERE  
 PRESENT. FOR CLAIMS THAT OVERLAP, NET  
 ACREAGE WAS DETERMINED BY CAD  
 MEASUREMENTS. CLAIMS WERE CONSIDERED IN  
 CHRONOLOGICAL ORDER OF LOCATION.

NOTE:  
 THIS PLAT IS FOR ASSESSMENT USE ONLY,  
 AND DOES NOT REPRESENT A SURVEY. NO  
 LIABILITY IS ASSUMED AS TO THE ACCURACY  
 OF THE DATA DELINEATED HEREON. USE OF  
 THIS PLAT FOR OTHER THAN ASSESSMENT  
 PURPOSES IS FORBIDDEN UNLESS APPROVED  
 BY THE DEPARTMENT OF TAXATION, DIVISION  
 OF ASSESSMENT STANDARDS.

UG DRAINAGE PIPELINE ESMT DOC  
 #208235. DOC #262486, PARCELS  
 12-100-02, 03, 04



M.D.B. & M.

LANDER COUNTY