

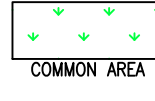
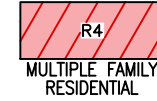
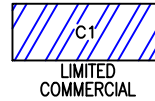
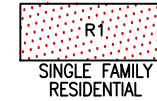
# 03-23 ZONING MAP

## R 43 E

### A Portion of Section 35

KT5 - Kingston Town Unit No. 5, Doc #72706A

KT - Kingston Town

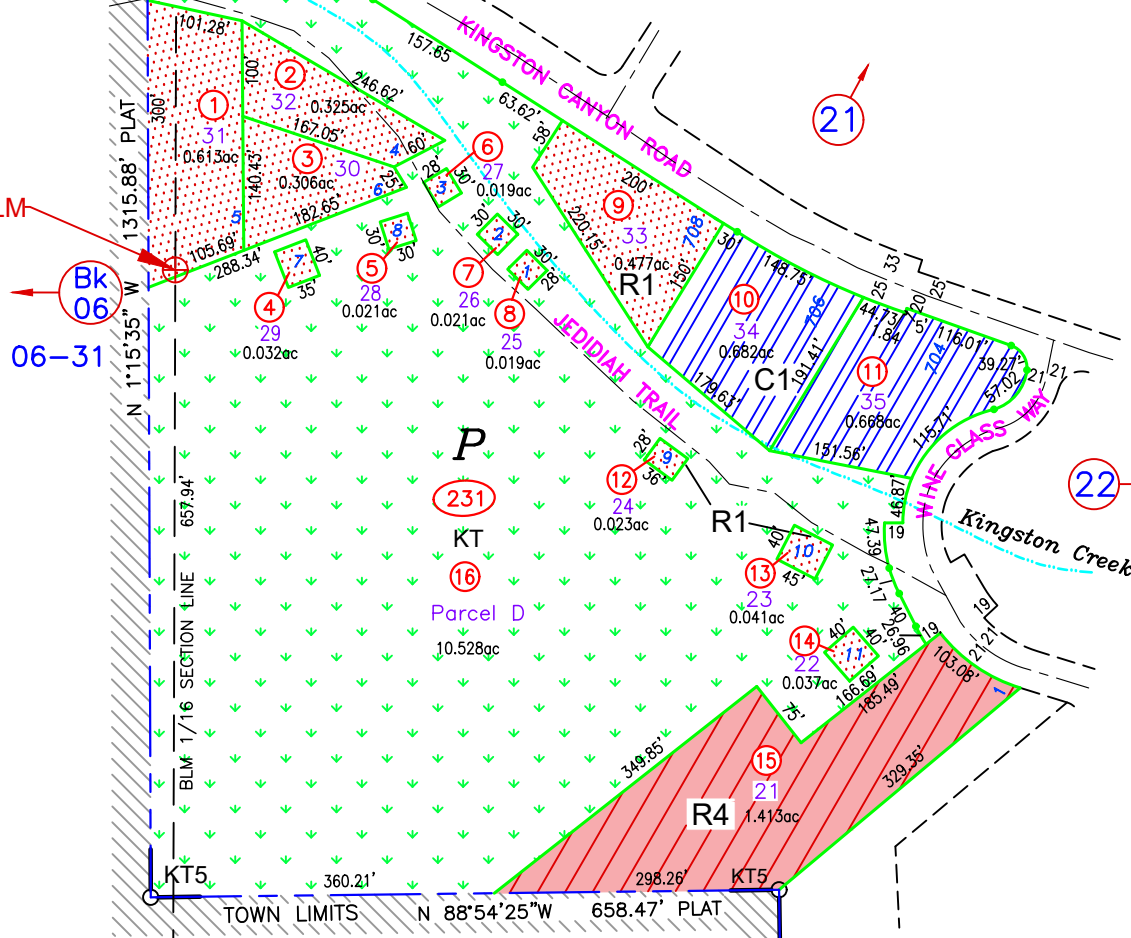


HUMBOLDT  
TOIYABE  
NATIONAL  
FOREST

1/16 Cor. BLM

Bk  
06

06-31

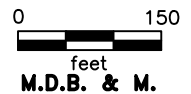
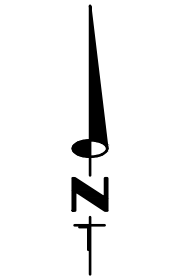


## T 16 N

**KINGSTON NOTE:**  
THE SECTION CORNERS SHOWN ON THE VARIOUS TOWN PLAT MAPS DO NOT EXACTLY COINCIDE WITH THE BLM SECTION CORNERS. (PLAT) INDICATES A PLATTED CORNER AND (BLM) INDICATES A BLM CORNER AS OBTAINED FROM THE CURRENT PUBLIC LANDBASE

GROSS ACREAGE IS SHOWN.  
(N) INDICATES NET ACREAGE  
(M) INDICATES CAD MEASURED

**NOTE:**  
THIS PLAT IS FOR ASSESSMENT USE ONLY, AND DOES NOT REPRESENT A SURVEY. NO LIABILITY IS ASSUMED AS TO THE ACCURACY OF THE DATA DELINEATED HEREON. USE OF THIS PLAT FOR OTHER THAN ASSESSMENT PURPOSES IS FORBIDDEN UNLESS APPROVED BY THE DEPARTMENT OF TAXATION, DIVISION OF ASSESSMENT STANDARDS.



**Kingston  
LANDER COUNTY**

REVIEWED 09/15/23 NJW  
RELABELLED KMA TO KT, DOC #273324, 04/14/22, NJW  
LANDBASE UPDATED 10/25/20 NJW

ZONING CA TO R1, 03-231-04/08, 12/14;  
DOC #2289317, 03/21/19 NJW