

03-22 ZONING MAP

KINGSTON NOTE:
THE SECTION CORNERS SHOWN ON THE VARIOUS TOWN PLAT MAPS DO NOT EXACTLY COINCIDE WITH THE BLM SECTION CORNERS. (PLAT) INDICATES A PLATTED CORNER AND (BLM) INDICATES A BLM CORNER AS OBTAINED FROM THE CURRENT PUBLIC LANDBASE

GROSS ACREAGE IS SHOWN. (N) INDICATES NET ACREAGE (M) INDICATES CAD MEASURED

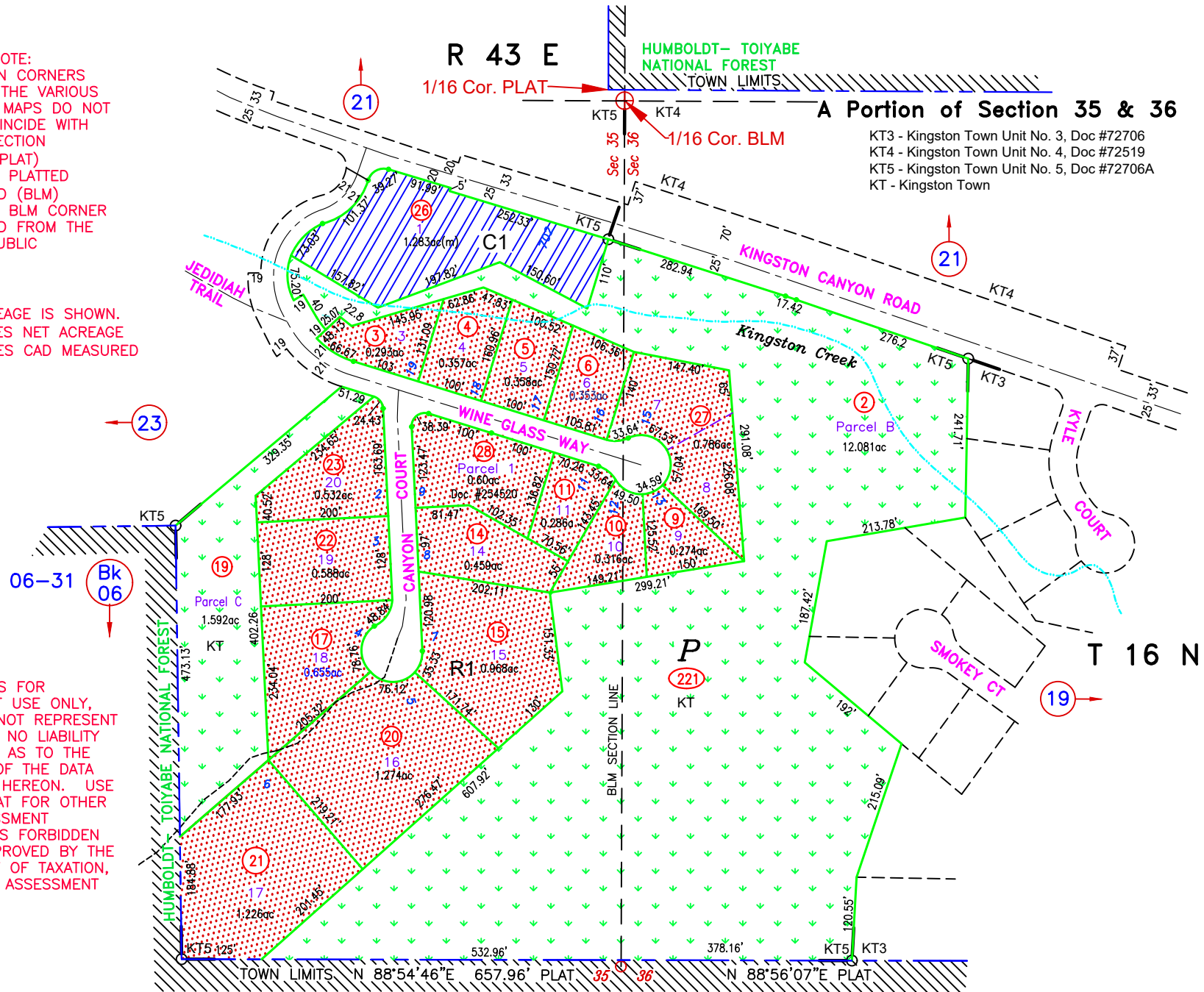
NOTE:
THIS PLAT IS FOR ASSESSMENT USE ONLY, AND DOES NOT REPRESENT A SURVEY. NO LIABILITY IS ASSUMED AS TO THE ACCURACY OF THE DATA DELINEATED HEREON. USE OF THIS PLAT FOR OTHER THAN ASSESSMENT PURPOSES IS FORBIDDEN UNLESS APPROVED BY THE DEPARTMENT OF TAXATION, DIVISION OF ASSESSMENT STANDARDS.

R1
SINGLE FAMILY RESIDENTIAL

C1
LIMITED COMMERCIAL

COMMON AREA

KT3 - Kingston Town Unit No. 3, Doc #72706
KT4 - Kingston Town Unit No. 4, Doc #72519
KT5 - Kingston Town Unit No. 5, Doc #72706A
KT - Kingston Town



ZONING CHANGE CA TO R1, 03-221-21, DOC #289317, 03/21/19 NJW

0 150
feet
M.D.B. & M.

REVIEWED 09/15/23 NJW
RELABELLED KMA TO KT, DOC #273324, 04/14/22, NJW
UPDATE LANDBASE 10/25/20 NJW

Kingston
LANDER COUNTY