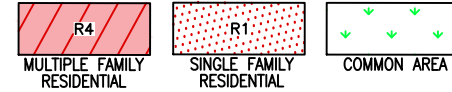
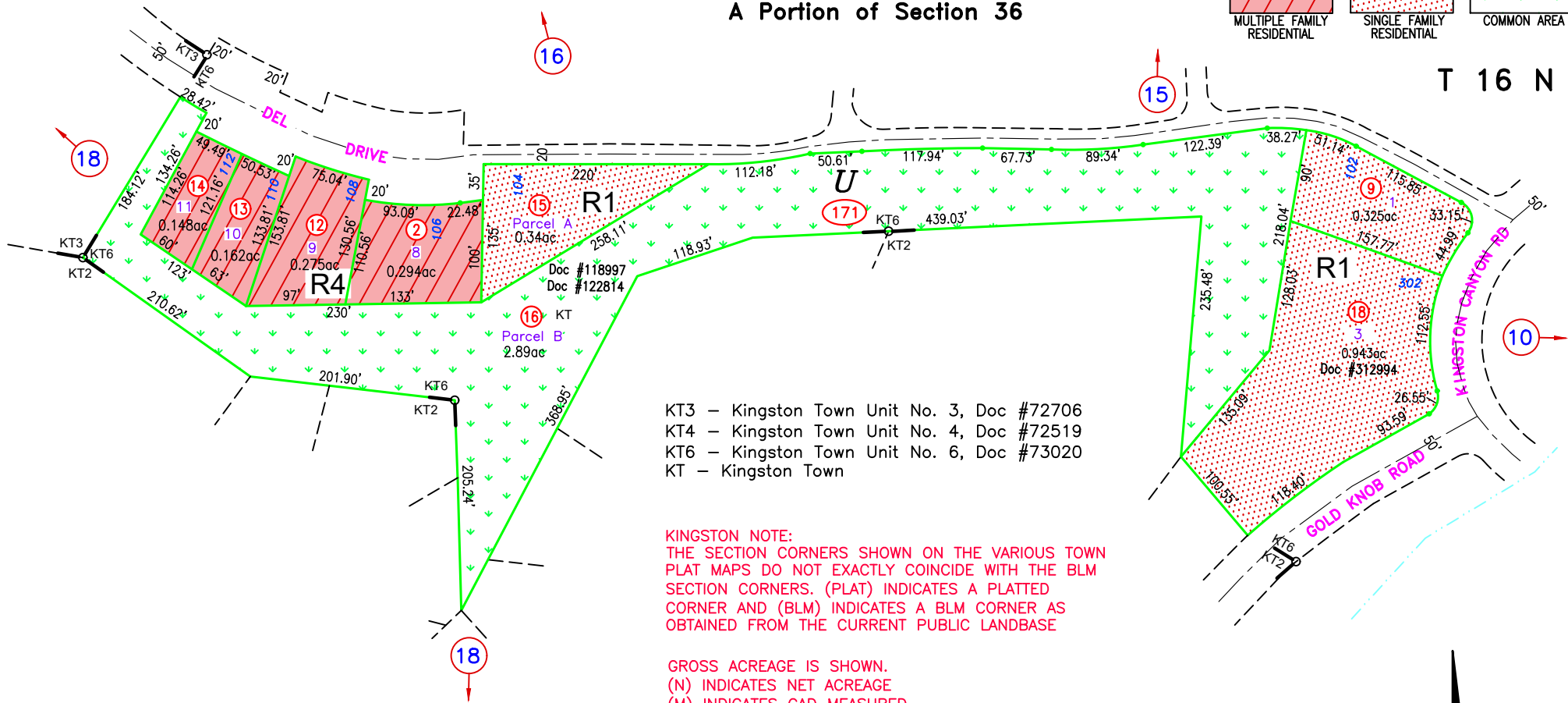


A Portion of Section 36



T 16 N

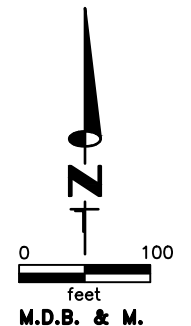


KT3 - Kingston Town Unit No. 3, Doc #72706
 KT4 - Kingston Town Unit No. 4, Doc #72519
 KT6 - Kingston Town Unit No. 6, Doc #73020
 KT - Kingston Town

KINGSTON NOTE:
 THE SECTION CORNERS SHOWN ON THE VARIOUS TOWN PLAT MAPS DO NOT EXACTLY COINCIDE WITH THE BLM SECTION CORNERS. (PLAT) INDICATES A PLATTER CORNER AND (BLM) INDICATES A BLM CORNER AS OBTAINED FROM THE CURRENT PUBLIC LANDBASE

GROSS ACREAGE IS SHOWN.
 (N) INDICATES NET ACREAGE
 (M) INDICATES CAD MEASURED

NOTE:
 THIS PLAT IS FOR ASSESSMENT USE ONLY, AND DOES NOT REPRESENT A SURVEY. NO LIABILITY IS ASSUMED AS TO THE ACCURACY OF THE DATA DELINEATED HEREON. USE OF THIS PLAT FOR OTHER THAN ASSESSMENT PURPOSES IS FORBIDDEN UNLESS APPROVED BY THE DEPARTMENT OF TAXATION, DIVISION OF ASSESSMENT STANDARDS.



M.D.B. & M.

Kingston
LANDER COUNTY

COMBINE 003-171-07 & 17 TO 003-171-18, DOC #312994, 09/23/24 NJW
 COMBINE 003-171-10 & 11 TO 003-171-17, DOC #309976, 01/14/24 NJW
 RELABELLED KMA TO KT, DOC #273324, 04/14/22, NJW
 UPDATE LANDBASE, 10/22/20 NJW

ZONING CHANGE CA TO R1, 03-171-15, DOC #289317, 03/21/19 NJW