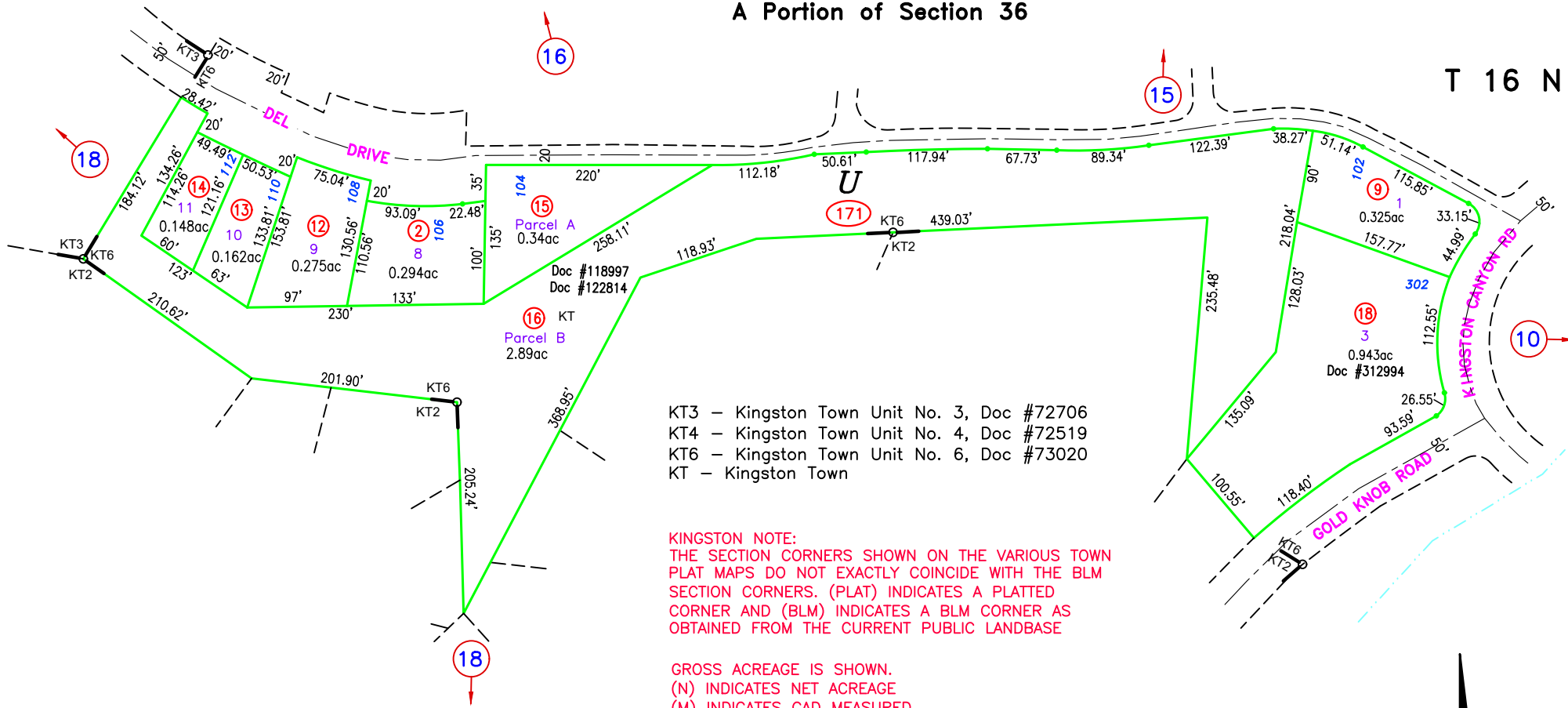


A Portion of Section 36

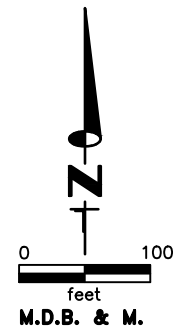


KT3 - Kingston Town Unit No. 3, Doc #72706  
 KT4 - Kingston Town Unit No. 4, Doc #72519  
 KT6 - Kingston Town Unit No. 6, Doc #73020  
 KT - Kingston Town

**KINGSTON NOTE:**  
 THE SECTION CORNERS SHOWN ON THE VARIOUS TOWN  
 PLAT MAPS DO NOT EXACTLY COINCIDE WITH THE BLM  
 SECTION CORNERS. (PLAT) INDICATES A PLATTED  
 CORNER AND (BLM) INDICATES A BLM CORNER AS  
 OBTAINED FROM THE CURRENT PUBLIC LANDBASE

GROSS ACREAGE IS SHOWN.  
 (N) INDICATES NET ACREAGE  
 (M) INDICATES CAD MEASURED

**NOTE:**  
 THIS PLAT IS FOR ASSESSMENT USE ONLY,  
 AND DOES NOT REPRESENT A SURVEY. NO  
 LIABILITY IS ASSUMED AS TO THE ACCURACY  
 OF THE DATA DELINEATED HEREON. USE OF  
 THIS PLAT FOR OTHER THAN ASSESSMENT  
 PURPOSES IS FORBIDDEN UNLESS APPROVED  
 BY THE DEPARTMENT OF TAXATION, DIVISION  
 OF ASSESSMENT STANDARDS.



COMBINE 003-171-07 & 17 TO 003-171-18, DOC #312994, 09/23/24 NJW  
 COMBINE 003-171-10 & 11 TO 003-171-17, DOC #309976, 01/14/24 NJW  
 RELABELED KMA TO KT, DOC #273324, 04/14/22, NJW  
 UPDATE LANDBASE, 10/22/20 NJW