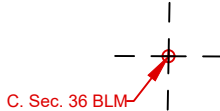
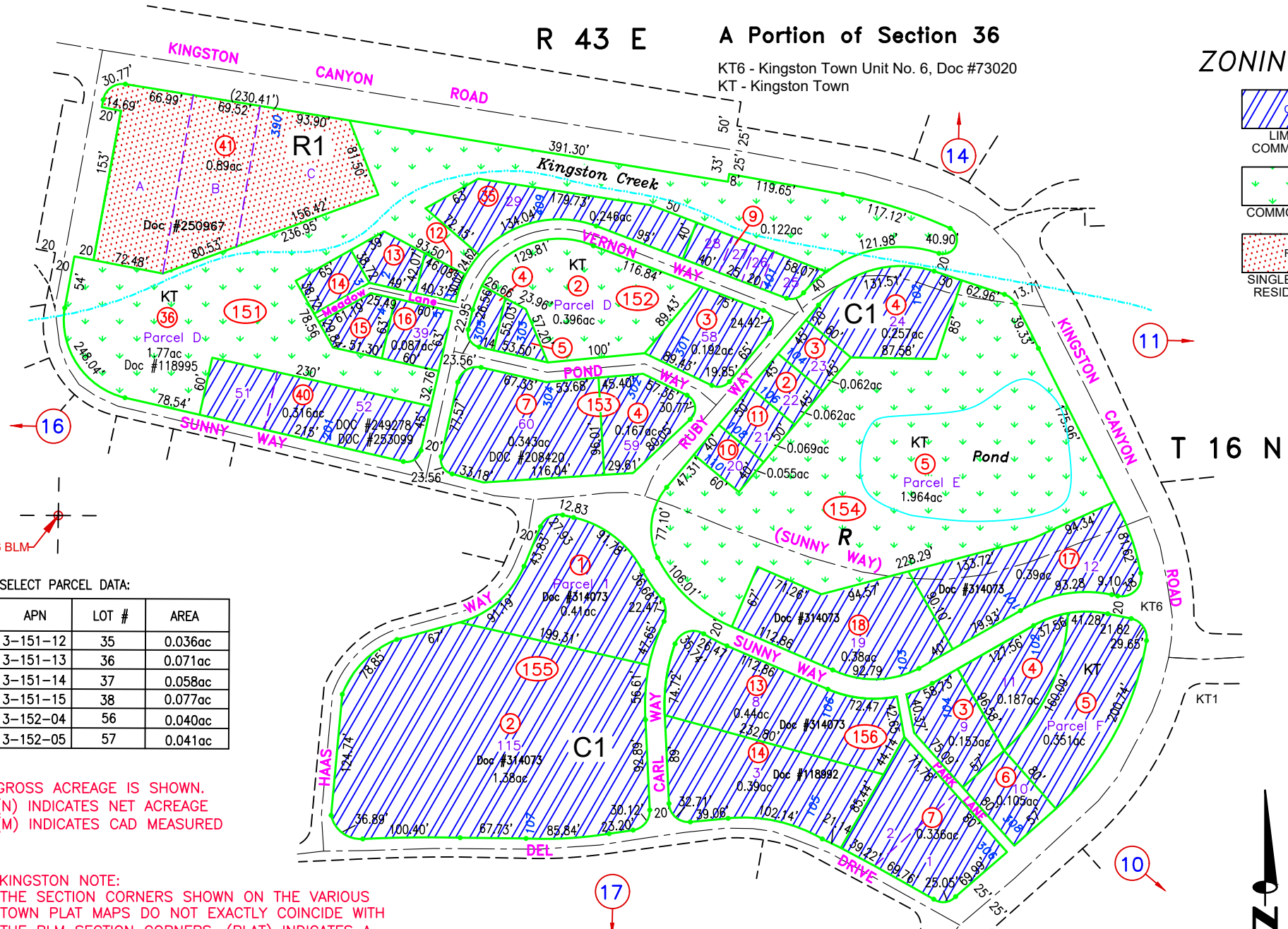
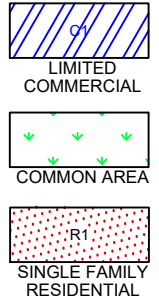


R 43 E

A Portion of Section 36

# 03-15 ZONING MAP

KT6 - Kingston Town Unit No. 6, Doc #73020  
KT - Kingston Town



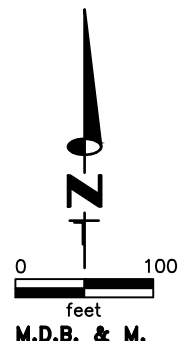
SELECT PARCEL DATA:

APN	LOT #	AREA
3-151-12	35	0.036ac
3-151-13	36	0.071ac
3-151-14	37	0.058ac
3-151-15	38	0.077ac
3-152-04	56	0.040ac
3-152-05	57	0.041ac

GROSS ACREAGE IS SHOWN.  
(N) INDICATES NET ACREAGE  
(M) INDICATES CAD MEASURED

**KINGSTON NOTE:**  
THE SECTION CORNERS SHOWN ON THE VARIOUS TOWN PLAT MAPS DO NOT EXACTLY COINCIDE WITH THE BLM SECTION CORNERS. (PLAT) INDICATES A PLATTED CORNER AND (BLM) INDICATES A BLM CORNER AS OBTAINED FROM THE CURRENT PUBLIC LANDBASE

**NOTE:**  
THIS PLAT IS FOR ASSESSMENT USE ONLY, AND DOES NOT REPRESENT A SURVEY. NO LIABILITY IS ASSUMED AS TO THE ACCURACY OF THE DATA DELINEATED HEREON. USE OF THIS PLAT FOR OTHER THAN ASSESSMENT PURPOSES IS FORBIDDEN UNLESS APPROVED BY THE DEPARTMENT OF TAXATION, DIVISION OF ASSESSMENT STANDARDS.



RECORD OF SURVEY, 003-154-17/18, 003-155-01/02, 003-156-13; DOC #314073, 10/24/24 NJW  
RELABELLED KMA TO KT, DOC #273324, 04/14/22, NJW

ZONING CA TO R1, 03-151-41; CA TO C1, 03-155-01; DOC #289317, 03/21/19 NJW

## Kingston LANDER COUNTY