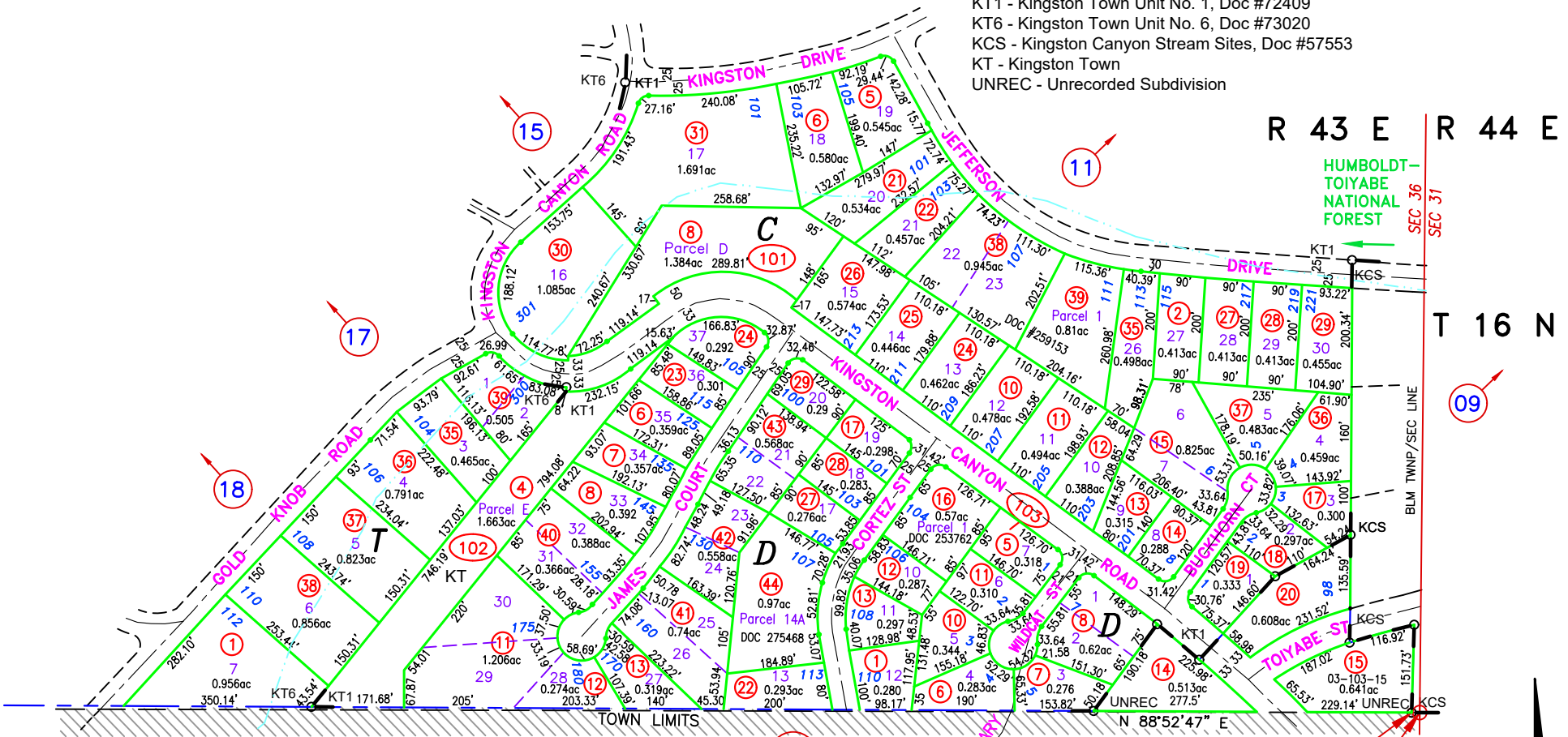


### A Portion of SE 1/4 Section 36

KT1 - Kingston Town Unit No. 1, Doc #72409  
 KT6 - Kingston Town Unit No. 6, Doc #73020  
 KCS - Kingston Canyon Stream Sites, Doc #57553  
 KT - Kingston Town  
 UNREC - Unrecorded Subdivision

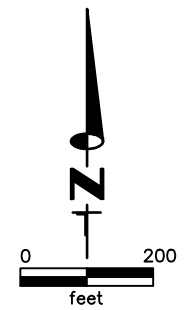


**KINGSTON NOTE:**  
 THE SECTION CORNERS SHOWN ON THE VARIOUS TOWN PLAT MAPS DO NOT EXACTLY COINCIDE WITH THE BLM SECTION CORNERS. (PLAT) INDICATES A PLATTED CORNER AND (BLM) INDICATES A BLM CORNER AS OBTAINED FROM THE CURRENT PUBLIC LANDBASE

GROSS ACREAGE IS SHOWN.  
 (N) INDICATES NET ACREAGE  
 (M) INDICATES CAD MEASURED

**NOTE:**  
 THIS PLAT IS FOR ASSESSMENT USE ONLY, AND DOES NOT REPRESENT A SURVEY. NO LIABILITY IS ASSUMED AS TO THE ACCURACY OF THE DATA DELINEATED HEREON. USE OF THIS PLAT FOR OTHER THAN ASSESSMENT PURPOSES IS FORBIDDEN UNLESS APPROVED BY THE DEPARTMENT OF TAXATION, DIVISION OF ASSESSMENT STANDARDS.

RECORD OF SURVEY, 003-103-08, DOC #314072, 10/24/24 NJW  
 RELABELLED KMA TO KT, DOC #273324, 12/16/21, NJW  
 BOUNDARY LINE ADJUSTMENT, 003-101-38, 39; DOC #259153, 11/09/20



M.D.B. & M.  
**Kingston**  
**LANDER COUNTY**