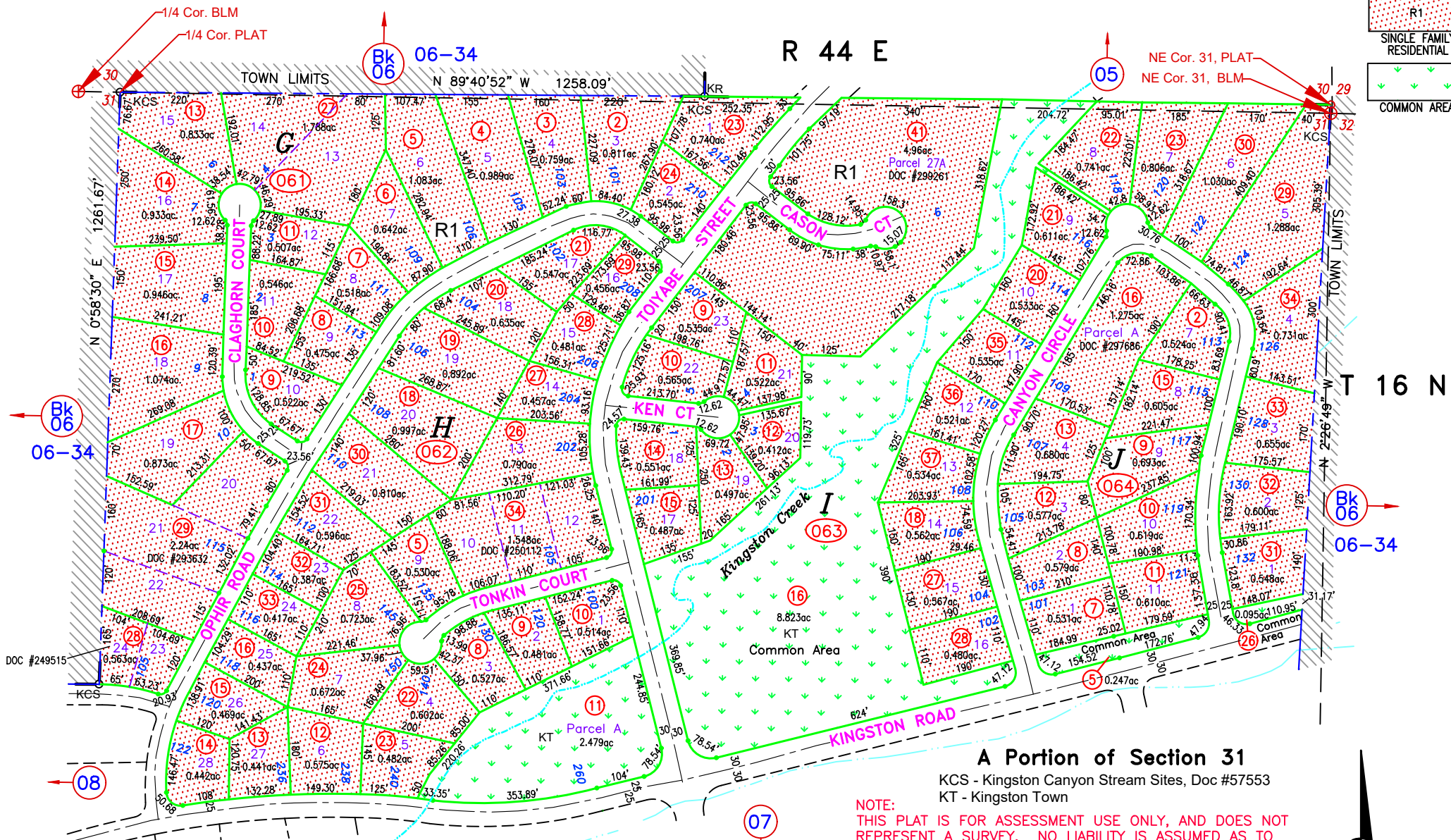
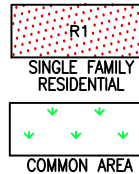


# 03-06 ZONING MAP



## A Portion of Section 31

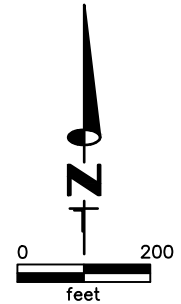
KCS - Kingston Canyon Stream Sites, Doc #57553  
 KT - Kingston Town

**NOTE:**  
 THIS PLAT IS FOR ASSESSMENT USE ONLY, AND DOES NOT REPRESENT A SURVEY. NO LIABILITY IS ASSUMED AS TO THE ACCURACY OF THE DATA DELINEATED HEREON. USE OF THIS PLAT FOR OTHER THAN ASSESSMENT PURPOSES IS FORBIDDEN UNLESS APPROVED BY THE DEPARTMENT OF TAXATION, DIVISION OF ASSESSMENT STANDARDS.

**KINGSTON NOTE:**  
 THE SECTION CORNERS SHOWN ON THE VARIOUS TOWN PLAT MAPS DO NOT EXACTLY COINCIDE WITH THE BLM SECTION CORNERS. (PLAT) INDICATES A PLATTED CORNER AND (BLM) INDICATES A BLM CORNER AS OBTAINED FROM THE CURRENT PUBLIC LANDBASE

GROSS ACREAGE IS SHOWN.  
 (N) INDICATES NET ACREAGE  
 (M) INDICATES CAD MEASURED

REVIEWED 08/28/23 NJW  
 RELABELLED KMA TO KT, DOC #273324, 12/16/21, NJW  
 COMBINE 03-064-01 & 14 TO 003-064-16, DOC #297686, 07/06/21, NJW  
 COMBINE 03-063-05, 06, 07, 08, 40 TO 003-063-41, DOC #299261, 07/06/21, NJW  
 COMBINE 03-063-05 WITH A SMALL PORTION OF 003-063-16, DOC #298741, #298742, 07/06/21



M.D.B. & M.  
**Kingston**  
**LANDER COUNTY**