

NOTE:

THIS PLAT IS FOR ASSESSMENT USE ONLY, AND DOES NOT REPRESENT A SURVEY. NO LIABILITY IS ASSUMED AS TO THE ACCURACY OF THE DATA DELINEATED HEREON. USE OF THIS PLAT FOR OTHER THAN ASSESSMENT PURPOSES IS FORBIDDEN UNLESS APPROVED BY THE DEPARTMENT OF TAXATION, DIVISION OF ASSESSMENT STANDARDS.

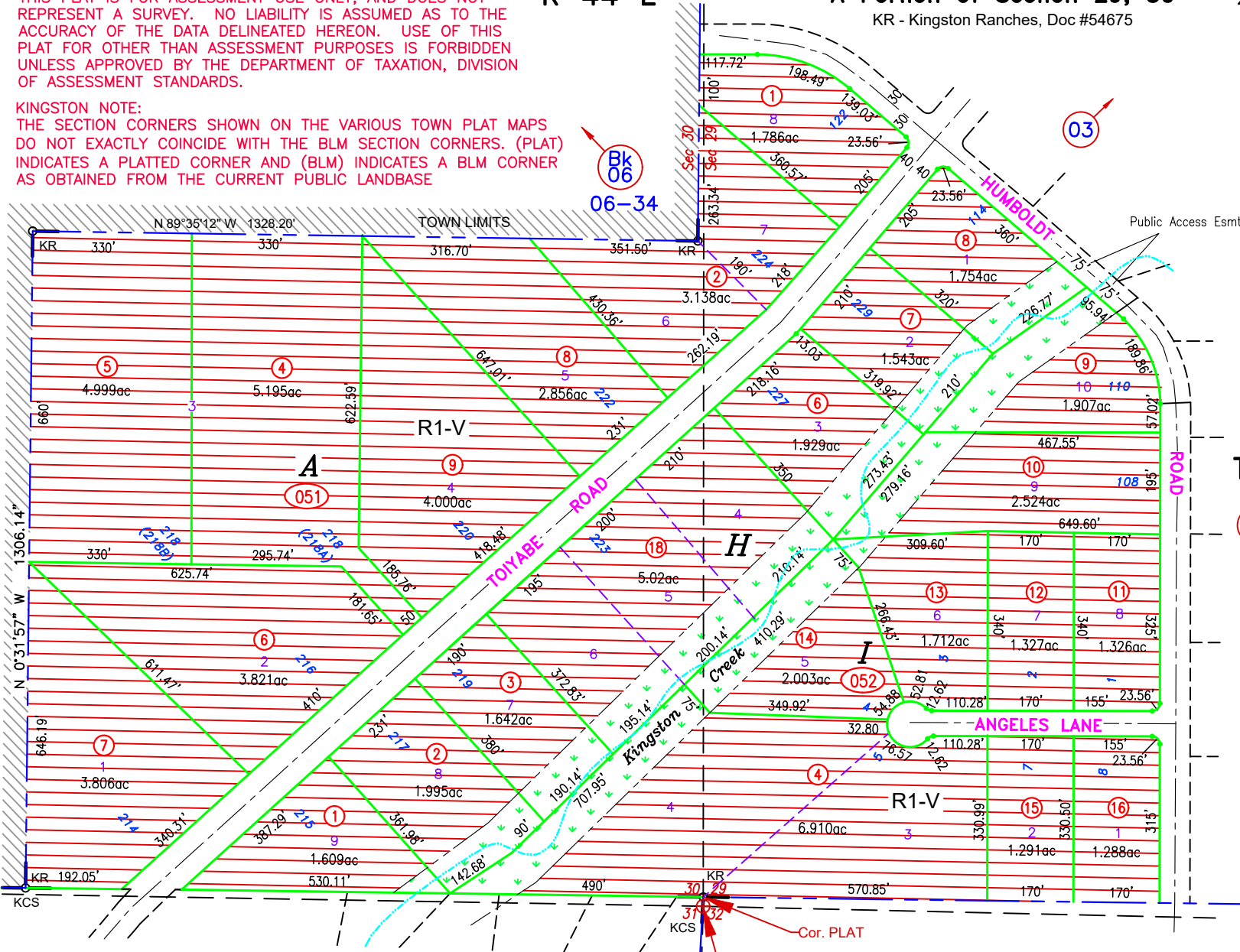
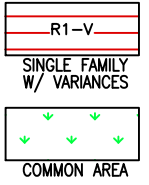
KINGSTON NOTE:

THE SECTION CORNERS SHOWN ON THE VARIOUS TOWN PLAT MAPS DO NOT EXACTLY COINCIDE WITH THE BLM SECTION CORNERS. (PLAT) INDICATES A PLATTED CORNER AND (BLM) INDICATES A BLM CORNER AS OBTAINED FROM THE CURRENT PUBLIC LANDBASE

R 44 E

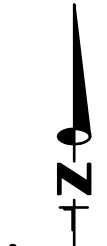
A Portion of Section 29, 30

KR - Kingston Ranches, Doc #54675



GROSS ACREAGE IS SHOWN.
(N) INDICATES NET ACREAGE
(M) INDICATES CAD MEASURED

T 16 N



M.D.B. & M.
Kingston
LANDER COUNTY

REVIEWED 08/28/23 NJW
UPDATE LANDBASE 08/10/20 NJW

ZONING CHANGE: REVISED CA BOUNDARY TO MATCH PUBLIC
EASEMENT AREA FROM KINGSTON RANCHES SUB, DOC #54675