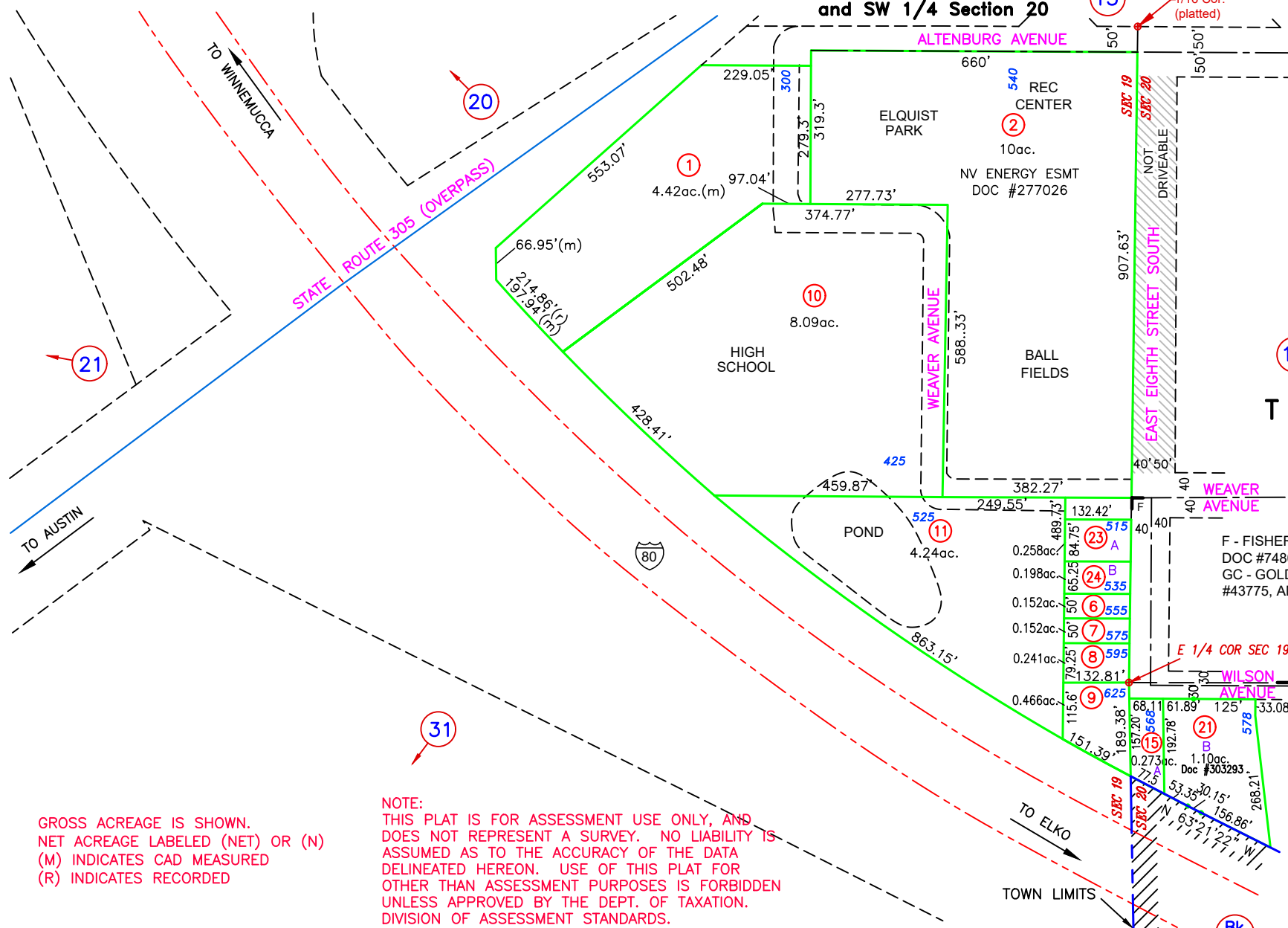


R 45 E
A Portion of E 1/2 Section 19
and SW 1/4 Section 20



T 32 N

F - FISHER ADD TO ESTELLA PARK ADD,
DOC #74808
GC - GOLD CREEK SUBDIVISION, DOC
#43775, AMENDED DOC #44184

NOTE:
THIS PLAT IS FOR ASSESSMENT USE ONLY, AND
DOES NOT REPRESENT A SURVEY. NO LIABILITY IS
ASSUMED AS TO THE ACCURACY OF THE DATA
DELINEATED HEREON. USE OF THIS PLAT FOR
OTHER THAN ASSESSMENT PURPOSES IS FORBIDDEN
UNLESS APPROVED BY THE DEPT. OF TAXATION,
DIVISION OF ASSESSMENT STANDARDS.

GROSS ACREAGE IS SHOWN.
NET ACREAGE LABELED (NET) OR (N)
(M) INDICATES CAD MEASURED
(R) INDICATES RECORDED

REVIEWED 03/27/23 NJW
BOUNDARY ADJUSTMENT, 002-190-15 & 21, DOC #303292, #303293, 05/11/22 NJW
UPDATE LANDBASE, REVISED BOUNDARY AND ACREAGE OF 002-190-01, DOC #177525, 02/15/22 NJW



Battle Mountain
LANDER COUNTY