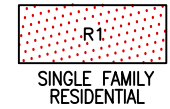
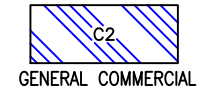


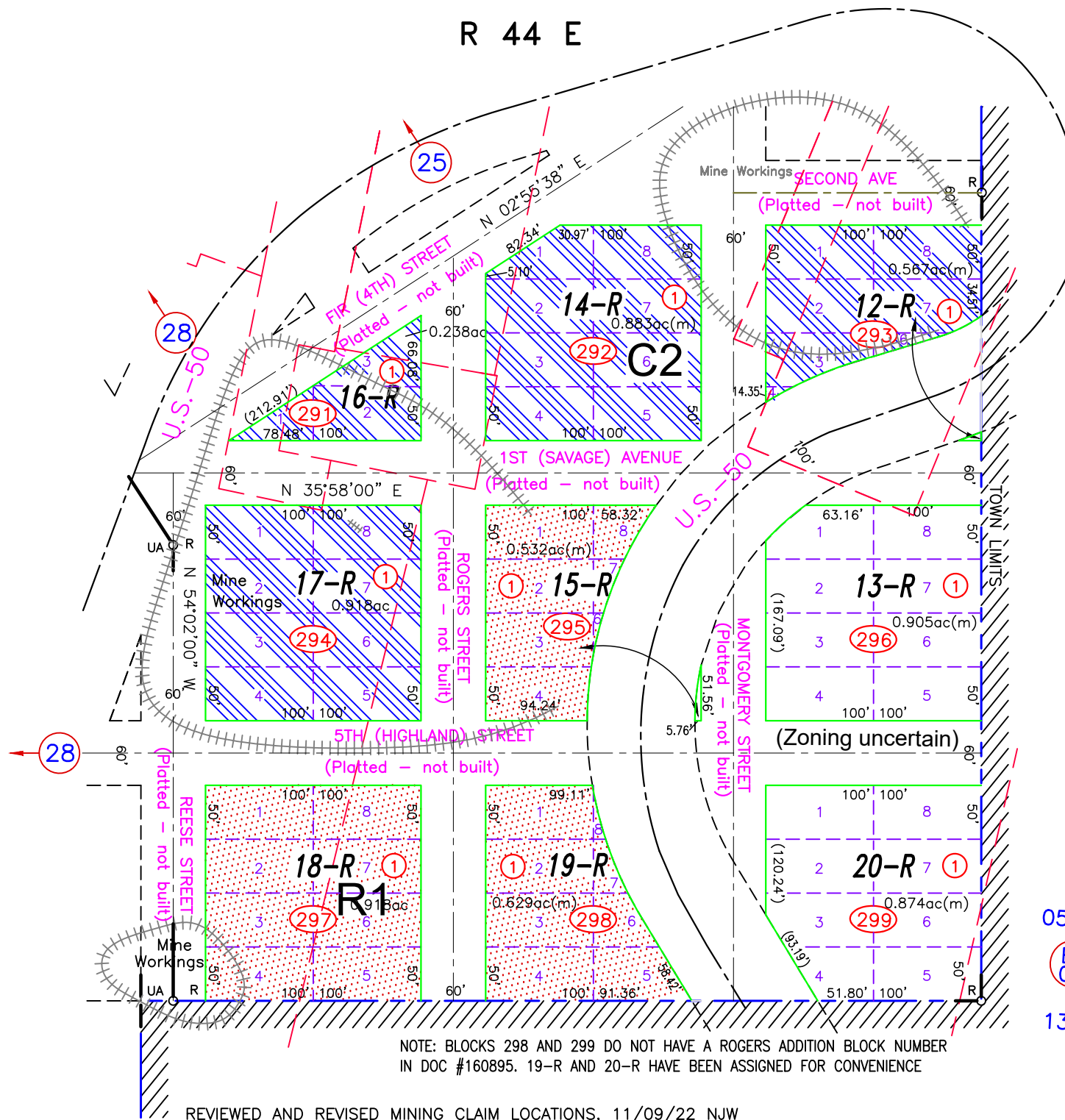
01-29 ZONING MAP

R 44 E



A Portion of Section 20
 R-ROGERS ADDITION
 UA-UPPER AUSTIN ADDITION
 DOC #160895

Traveled Road or Trail (Loc approx)



T 19 N

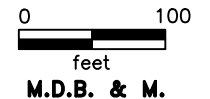
NOTE:
 THIS PLAT IS FOR ASSESSMENT USE ONLY,
 AND DOES NOT REPRESENT A SURVEY. NO
 LIABILITY IS ASSUMED AS TO THE
 ACCURACY OF THE DATA DELINEATED
 HEREON. USE OF THIS PLAT FOR OTHER
 THAN ASSESSMENT PURPOSES IS
 FORBIDDEN UNLESS APPROVED BY THE
 DEPARTMENT OF TAXATION, DIVISION OF
 ASSESSMENT STANDARDS.

(M) INDICATES CAD MEASURED

05-58

BK 05

13-14



M.D.B. & M.

NOTE: BLOCKS 298 AND 299 DO NOT HAVE A ROGERS ADDITION BLOCK NUMBER
 IN DOC #160895. 19-R AND 20-R HAVE BEEN ASSIGNED FOR CONVENIENCE