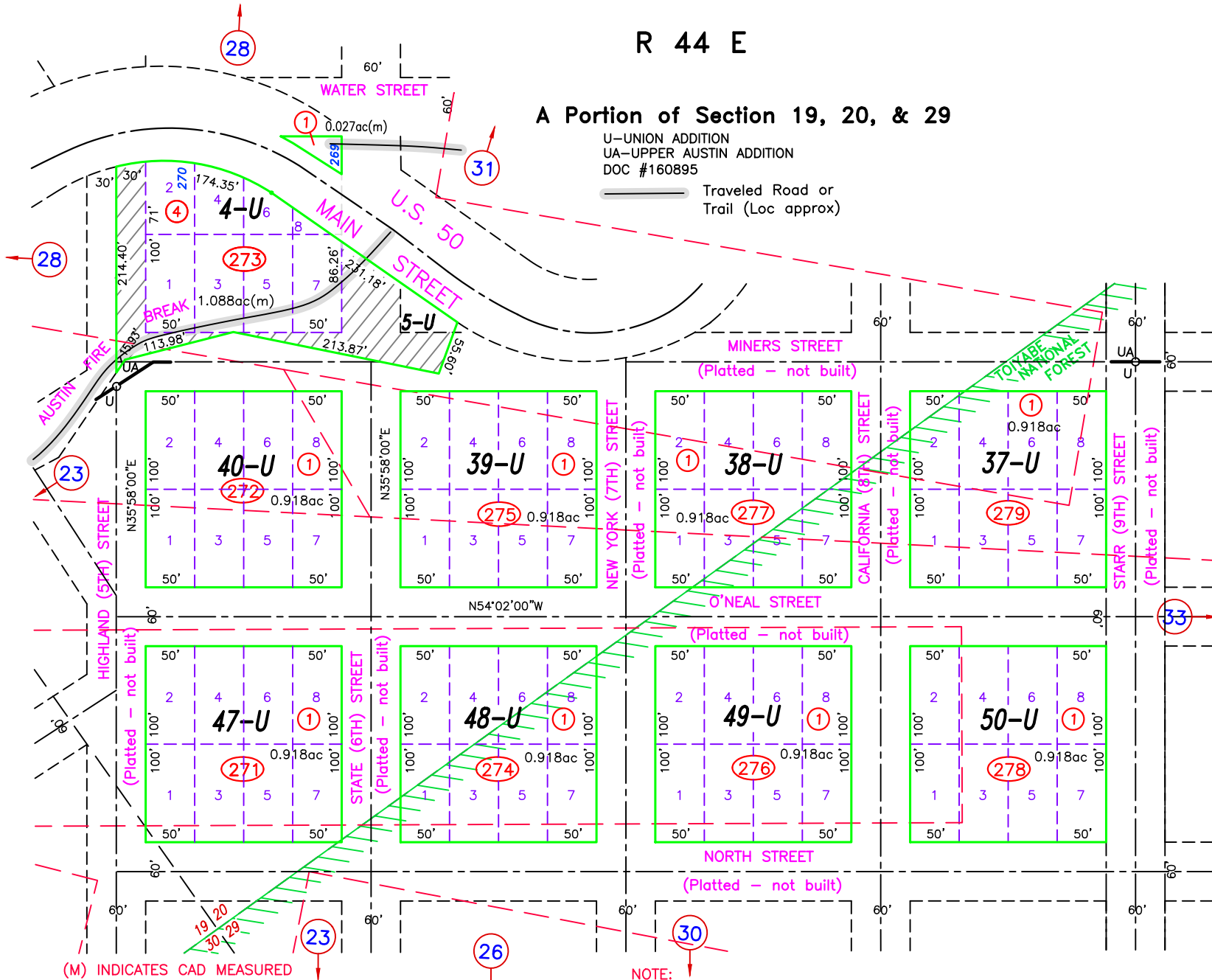


R 44 E

A Portion of Section 19, 20, & 29

U-UNION ADDITION  
UA-UPPER AUSTIN ADDITION  
DOC #160895

Traveled Road or Trail (Loc approx)



T 19 N

(M) INDICATES CAD MEASURED

NOTE:  
THIS PLAT IS FOR ASSESSMENT USE ONLY, AND DOES NOT REPRESENT A SURVEY. NO LIABILITY IS ASSUMED AS TO THE ACCURACY OF THE DATA DELINEATED HEREON. USE OF THIS PLAT FOR OTHER THAN ASSESSMENT PURPOSES IS FORBIDDEN UNLESS APPROVED BY THE DEPT. OF TAXATION.

REVIEWED 09/25/2023 NJW  
REVIEWED AND REVISED MINING CLAIM LOCATIONS; 11/07/22 NJW

Austin  
LANDER COUNTY