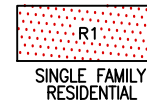


01-19 ZONING MAP



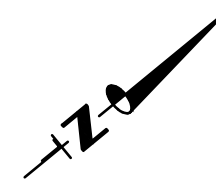
A Portion of Sections 19 & 30

A-TOWN OF AUSTIN
S-SOUTHERN ADDITION
U-UNION ADDITION
DOC #160895

— Traveled Road or Trail (Loc approx)

NOTE:
THIS PLAT IS FOR ASSESSMENT USE ONLY, AND DOES NOT REPRESENT A SURVEY. NO LIABILITY IS ASSUMED AS TO THE ACCURACY OF THE DATA DELINEATED HEREON. USE OF THIS PLAT FOR OTHER THAN ASSESSMENT PURPOSES IS FORBIDDEN UNLESS APPROVED BY THE DEPT. OF TAXATION.

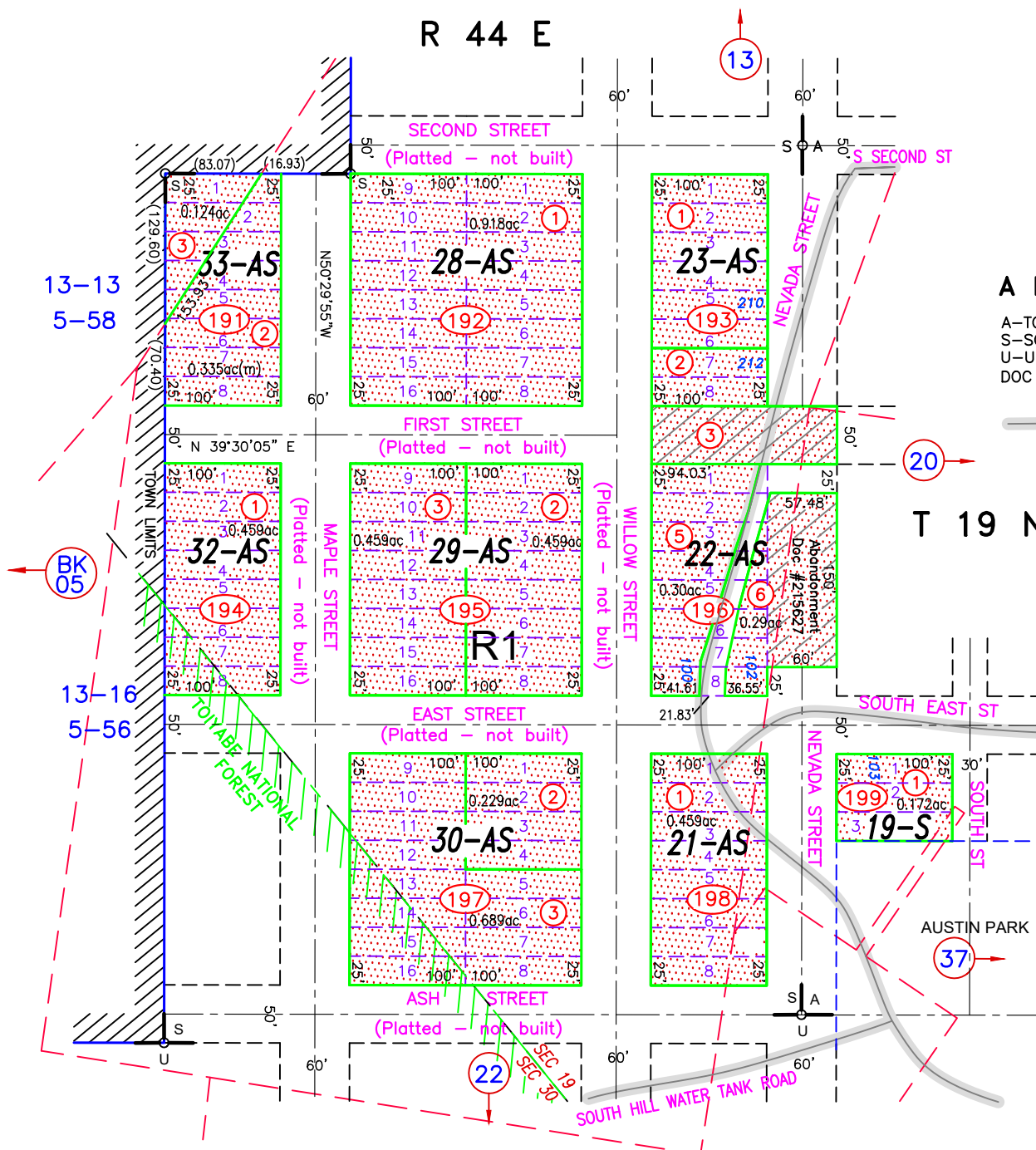
(M) INDICATES CAD MEASURED



M.D.B. & M.

**Austin
LANDER COUNTY**

REVISED 001-196-06, DOC #215627, STREET ABANDONMENT, 01/06/22 NJW
REVIEWED AND REVISED MINING CLAIM LOCATIONS, PARCELS SPLIT ALONG CLAIM BOUNDARIES,
SPLIT 001-191-01 TO 02, 03; 07/13/22 NJW



13-13
5-58

BK 05

13-16
5-56

R 44 E

13

T 19 N

20

37

SECOND STREET
(Platted - not built)

FIRST STREET
(Platted - not built)

EAST STREET
(Platted - not built)

ASH STREET
(Platted - not built)

ASH STREET
(Platted - not built)

ASH STREET
(Platted - not built)

ASH STREET
(Platted - not built)

WILLOW STREET
(Platted - not built)

MAPLE STREET
(Platted - not built)

TOYABE NATIONAL FOREST

SOUTH HILL WATER TANK ROAD

NEVADA STREET

NEVADA STREET

NEVADA STREET

S SECOND ST

SOUTH EAST ST

SOUTH ST

AUSTIN PARK

TOWN LIMITS

TOWN LIMITS

TOWN LIMITS

TOWN LIMITS

0.124ac

0.335ac(m)

0.459ac

0.459ac

0.229ac

0.689ac

0.459ac

0.918ac

0.459ac

0.459ac

0.30ac

0.172ac

0.459ac

0.459ac

0.459ac

0.918ac

0.459ac

0.459ac

0.30ac

0.172ac

0.459ac

0.459ac

0.459ac

0.918ac

0.459ac

0.459ac

0.30ac

0.172ac

0.459ac

0.459ac

0.459ac

0.918ac

0.459ac

0.459ac

0.30ac

0.172ac

0.459ac

0.459ac

0.459ac

0.918ac

0.459ac

0.459ac

0.30ac

0.172ac

0.459ac

0.459ac

0.459ac

0.918ac

0.459ac

0.459ac

0.30ac

0.172ac

0.459ac

0.459ac

0.459ac

0.918ac

0.459ac

0.459ac

0.30ac

0.172ac

0.459ac

0.459ac

0.459ac

0.918ac

0.459ac

0.459ac

0.30ac

0.172ac

0.459ac

0.459ac

0.459ac

0.918ac

0.459ac

0.459ac

0.30ac

0.172ac

0.459ac

0.459ac

0.459ac

0.918ac

0.459ac

0.459ac

0.30ac

0.172ac

0.459ac

0.459ac

0.459ac

0.918ac

0.459ac

0.459ac

0.30ac

0.172ac

0.459ac

0.459ac

0.459ac

0.918ac

0.459ac

0.459ac

0.30ac

0.172ac

0.459ac

0.459ac

0.459ac

0.918ac

0.459ac

0.459ac

0.30ac

0.172ac

0.459ac

0.459ac

0.459ac

0.918ac

0.459ac

0.459ac

0.30ac

0.172ac

0.459ac

0.459ac

0.459ac

0.918ac

0.459ac

0.459ac

0.30ac

0.172ac

0.459ac

0.459ac

0.459ac

0.918ac

0.459ac

0.459ac

0.30ac

0.172ac

0.459ac

0.459ac

0.459ac

0.918ac

0.459ac

0.459ac

0.30ac

0.172ac

0.459ac

0.459ac

0.459ac

0.918ac

0.459ac

0.459ac

0.30ac

0.172ac

0.459ac

0.459ac

0.459ac

0.918ac

0.459ac

0.459ac

0.30ac

0.172ac

0.459ac

0.459ac

0.459ac

0.918ac

0.459ac

0.459ac

0.30ac

0.172ac

0.459ac

0.459ac

0.459ac

0.918ac

0.459ac

0.459ac

0.30ac

0.172ac

0.459ac

0.459ac

0.459ac

0.918ac

0.459ac

0.459ac

0.30ac

0.172ac

0.459ac

0.459ac

0.459ac

0.918ac

0.459ac

0.459ac

0.30ac

0.172ac

0.459ac

0.459ac

0.459ac

0.918ac

0.459ac

0.459ac

0.30ac

0.172ac

0.459ac

0.459ac

0.459ac

0.918ac

0.459ac

0.459ac

0.30ac

0.172ac

0.459ac

0.459ac

0.459ac

0.918ac

0.459ac

0.459ac

0.30ac

0.172ac

0.459ac

0.459ac

0.459ac

0.918ac

0.459ac

0.459ac

0.30ac

0.172ac

0.459ac

0.459ac

0.459ac

0.918ac

0.459ac

0.459ac

0.30ac

0.172ac

0.459ac

0.459ac

0.459ac

0.918ac

0.459ac

0.459ac

0.30ac

0.172ac

0.459