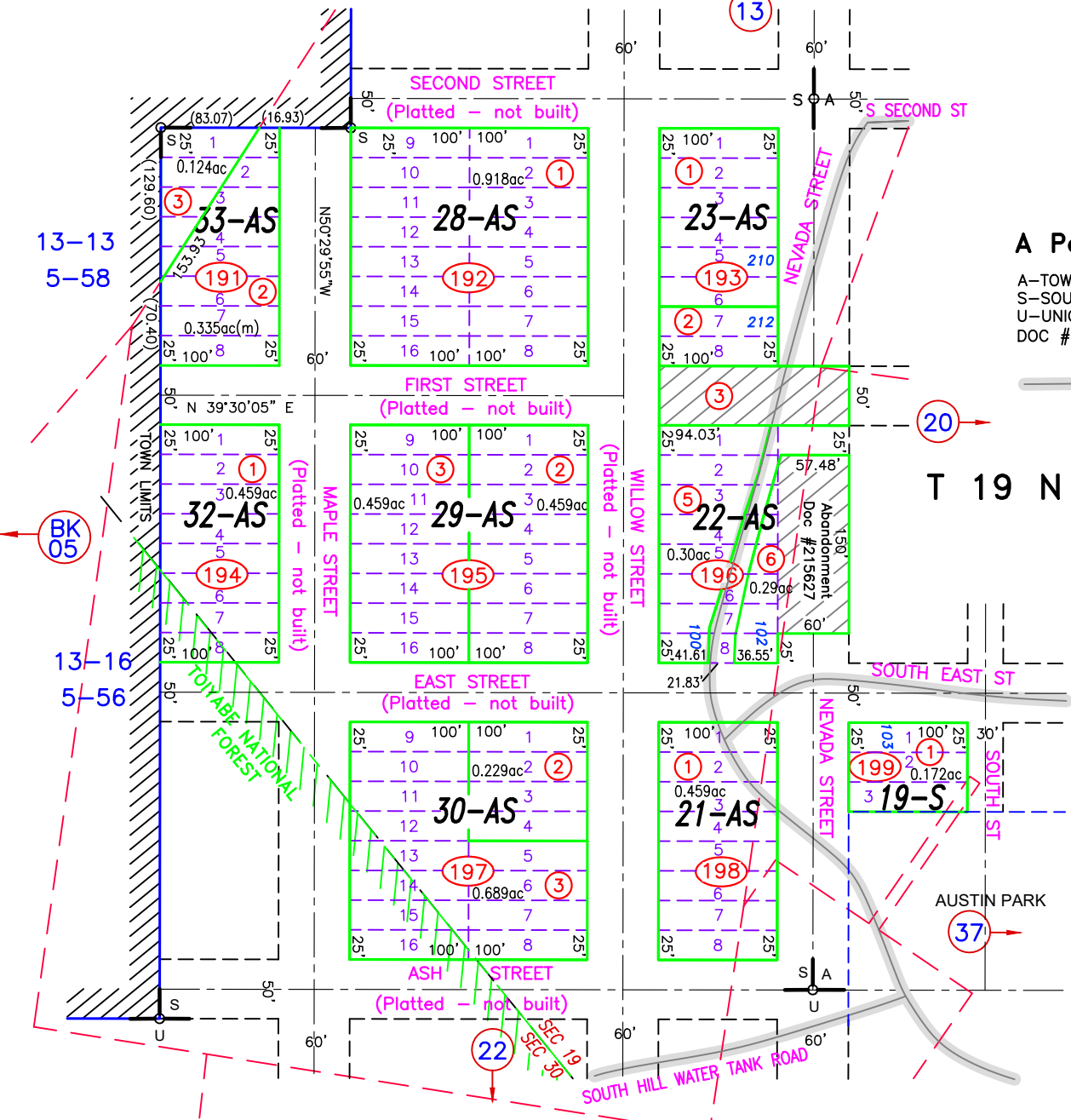


R 44 E

13



### A Portion of Sections 19 & 30

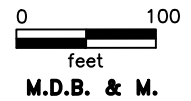
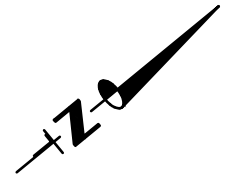
A-TOWN OF AUSTIN  
 S-SOUTHERN ADDITION  
 U-UNION ADDITION  
 DOC #160895

Traveled Road or  
 Trail (Loc approx)

T 19 N

NOTE:  
 THIS PLAT IS FOR ASSESSMENT USE ONLY,  
 AND DOES NOT REPRESENT A SURVEY. NO  
 LIABILITY IS ASSUMED AS TO THE ACCURACY  
 OF THE DATA DELINEATED HEREON. USE OF  
 THIS PLAT FOR OTHER THAN ASSESSMENT  
 PURPOSES IS FORBIDDEN UNLESS APPROVED  
 BY THE DEPT. OF TAXATION.

(M) INDICATES CAD MEASURED



REVISED 001-196-06, DOC #215627, STREET ABANDONMENT, 01/06/22 NJW  
 REVIEWED AND REVISED MINING CLAIM LOCATIONS, PARCELS SPLIT ALONG CLAIM BOUNDARIES,  
 SPLIT 001-191-01 TO 02, 03; 07/13/22 NJW

Austin  
 LANDER COUNTY