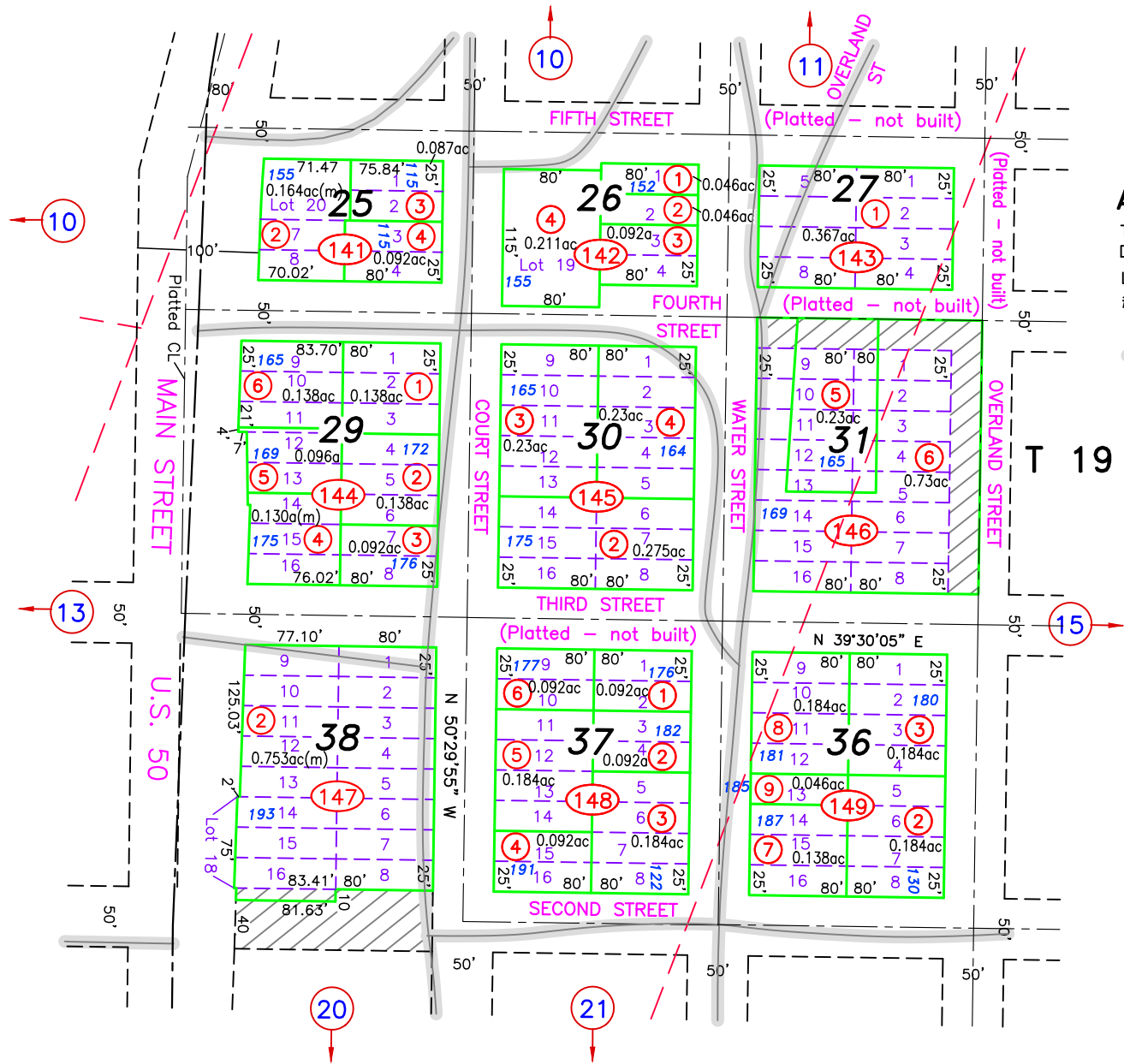


R 44 E



A Portion of SE 1/4 Section 19

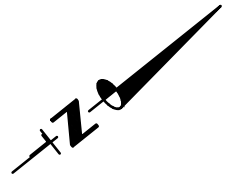
TOWN OF AUSTIN
DOC #160895

Lots 18, 19, 20 from Austin Town Patent,
#27-66-0134, DOC #43986, and BK 25 PG 149

— Traveled Road or
Trail (Loc approx)

NOTE:
THIS PLAT IS FOR ASSESSMENT USE ONLY, AND DOES NOT REPRESENT A SURVEY. NO LIABILITY IS ASSUMED AS TO THE ACCURACY OF THE DATA DELINEATED HEREON. USE OF THIS PLAT FOR OTHER THAN ASSESSMENT PURPOSES IS FORBIDDEN UNLESS APPROVED BY THE DEPT. OF TAXATION.

(M) INDICATES CAD MEASURED



0 100
feet

M.D.B. & M.

Austin
LANDER COUNTY