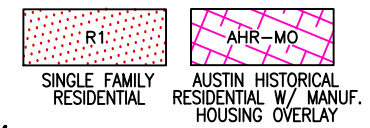


01-11 ZONING MAP



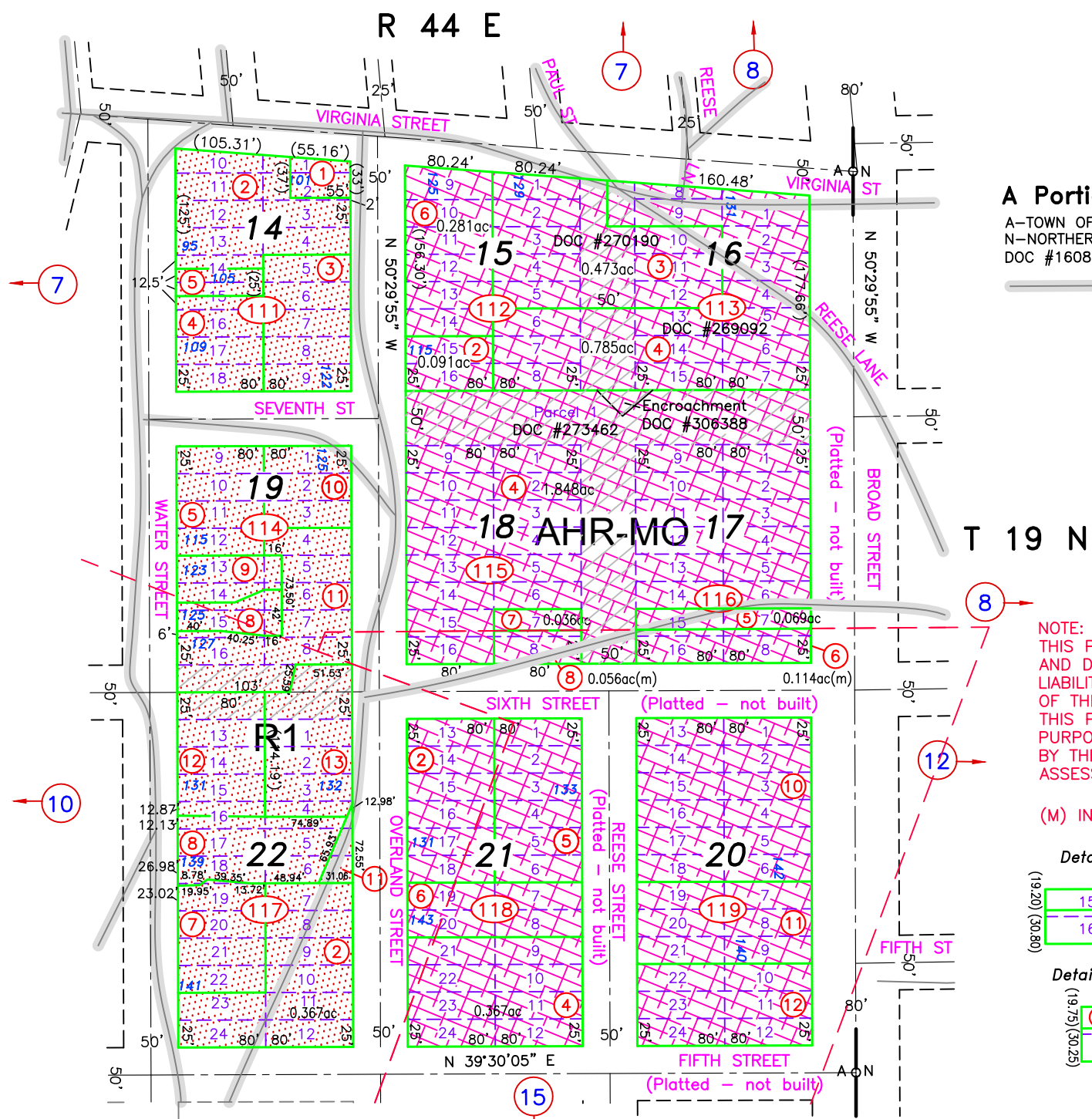
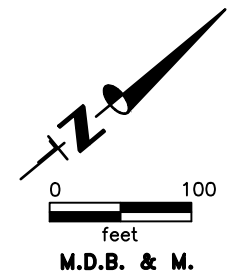
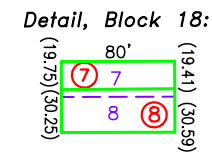
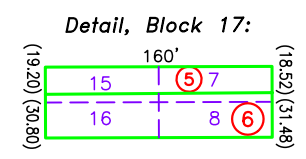
A Portion of SE 1/4 Section 19

A-TOWN OF AUSTIN
 N-NORTHERN ADDITION
 DOC #160895

Traveled Road or Trail (Loc approx)

NOTE:
 THIS PLAT IS FOR ASSESSMENT USE ONLY, AND DOES NOT REPRESENT A SURVEY. NO LIABILITY IS ASSUMED AS TO THE ACCURACY OF THE DATA DELINEATED HEREON. USE OF THIS PLAT FOR OTHER THAN ASSESSMENT PURPOSES IS FORBIDDEN UNLESS APPROVED BY THE DEPT. OF TAXATION. DIVISION OF ASSESSMENT STANDARDS.

(M) INDICATES CAD MEASURED



ENCROACHMENT EASEMENT, 001-115-04, DOC #306388, 12/27/22 NJW
 REVIEWED AND REVISED MINING CLAIM LOCATIONS, PARCELS SPLIT ALONG CLAIM BOUNDARIES,
 SPLIT 001-115-02 TO 001-115-07, 08; 001-116-02 TO 001-116-05, 06; 07/25/22 NJW