

R 44 E

NOTE:  
THIS PLAT IS FOR ASSESSMENT USE ONLY,  
AND DOES NOT REPRESENT A SURVEY. NO  
LIABILITY IS ASSUMED AS TO THE  
ACCURACY OF THE DATA DELINEATED  
HEREON. USE OF THIS PLAT FOR OTHER  
THAN ASSESSMENT PURPOSES IS FORBIDDEN  
UNLESS APPROVED BY THE DEPT. OF  
TAXATION, DIVISION OF ASSESSMENT  
STANDARDS.

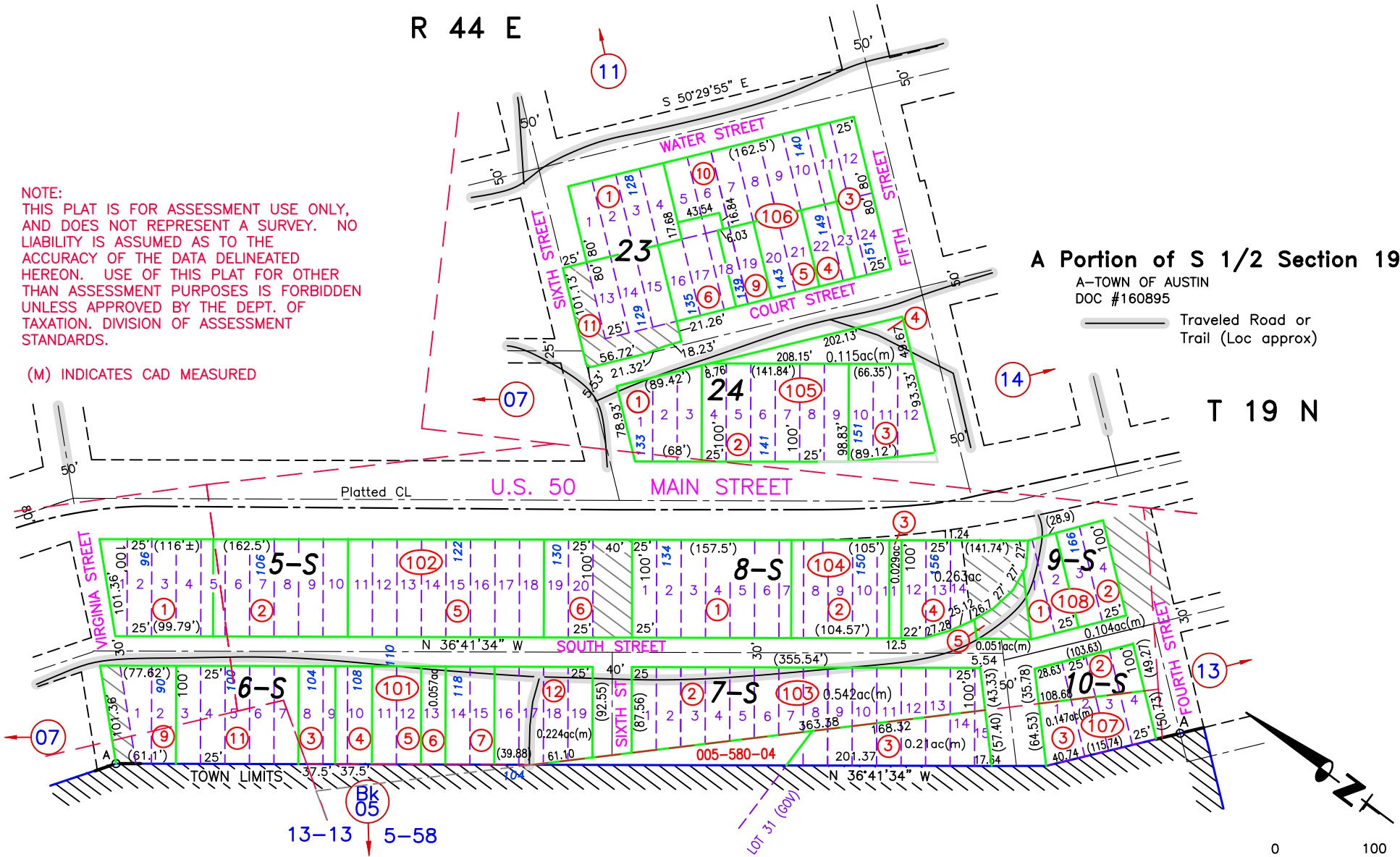
(M) INDICATES CAD MEASURED

A Portion of S 1/2 Section 19

A-TOWN OF AUSTIN  
DOC #160895

Traveled Road or  
Trail (Loc approx)

T 19 N



001-101-13, 001-103-04 COMBINED INTO 005-580-04,  
DOC #305917, 11/30/22, NJW

REVIEWED AND REVISED MINING CLAIM LOCATIONS,  
PARCELS SPLIT ALONG CLAIM BOUNDARIES, SPLIT  
001-101-08 TO 001-101-12, 13;  
001-103-01 TO 001-103-02, 03, 04;  
001-107-01 TO 001-107-02, 03; 06/13/22 NJW



M.D.B. & M.

Austin  
LANDER COUNTY