

01-08  
ZONING MAP

R 44 E



AHR-MO  
AUSTIN HISTORICAL  
RESIDENTIAL W/ MANUF.  
HOUSING OVERLAY

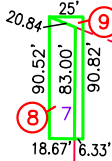
A Portion of E 1/2 Section 19

N-NORTHERN ADDITION  
A-TOWN OF AUSTIN  
DOC #160895

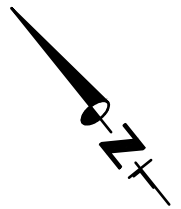
Traveled Road or  
Trail (Loc approx)

T 19 N

Detail: Lot 7,  
BL 15-N



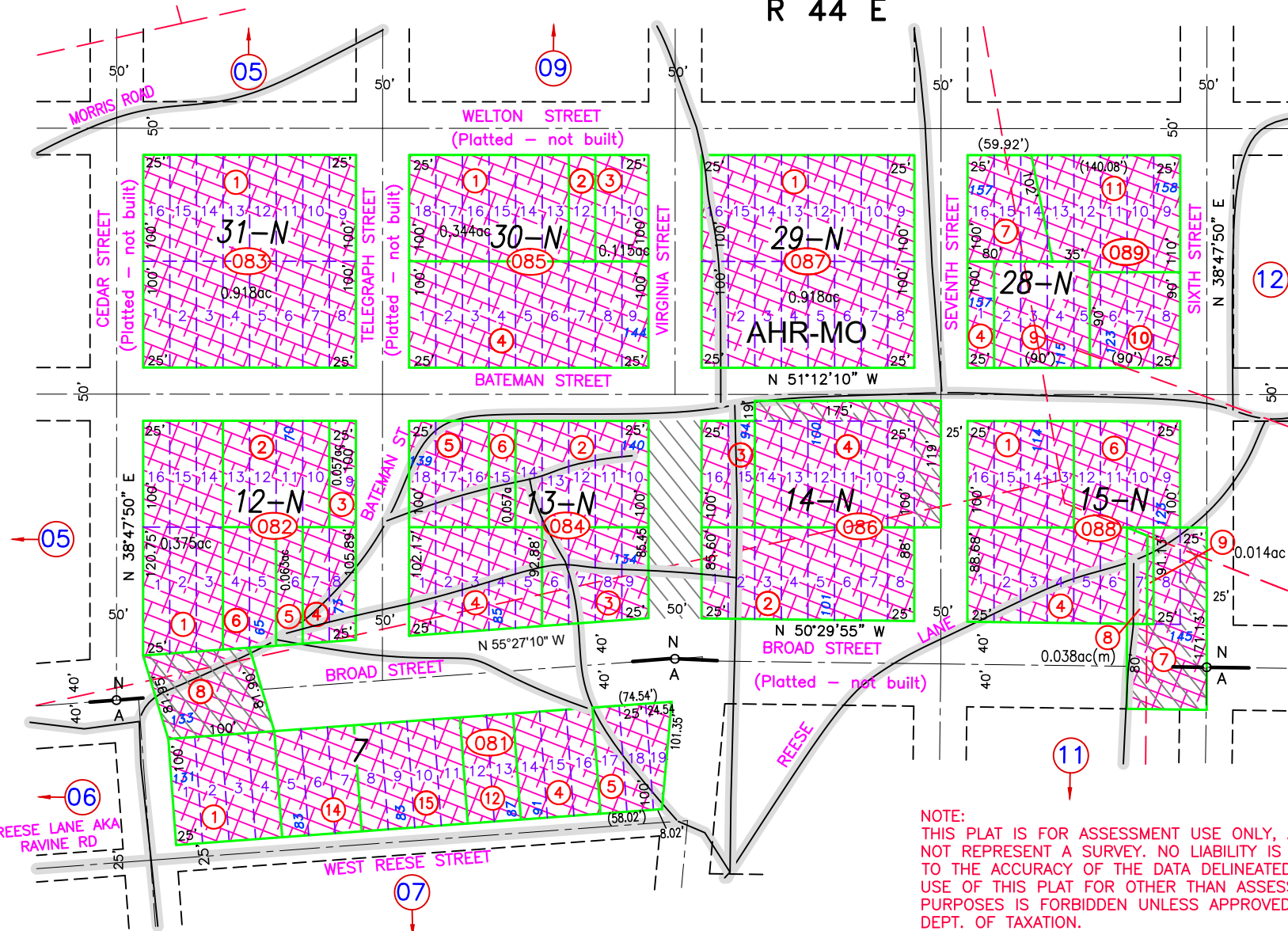
NOTE:  
THIS PLAT IS FOR ASSESSMENT USE ONLY, AND DOES  
NOT REPRESENT A SURVEY. NO LIABILITY IS ASSUMED AS  
TO THE ACCURACY OF THE DATA DELINEATED HEREON.  
USE OF THIS PLAT FOR OTHER THAN ASSESSMENT  
PURPOSES IS FORBIDDEN UNLESS APPROVED BY THE  
DEPT. OF TAXATION.  
(M) INDICATES CAD MEASURED



M.D.B. & M.

Austin

LANDER COUNTY



REVIEWED AND REVISED MINING CLAIM LOCATIONS, PARCELS SPLIT ALONG MINING CLAIMS,  
001-088-03 SPLIT TO 001-088-08, 09; 06/13/22 NJW