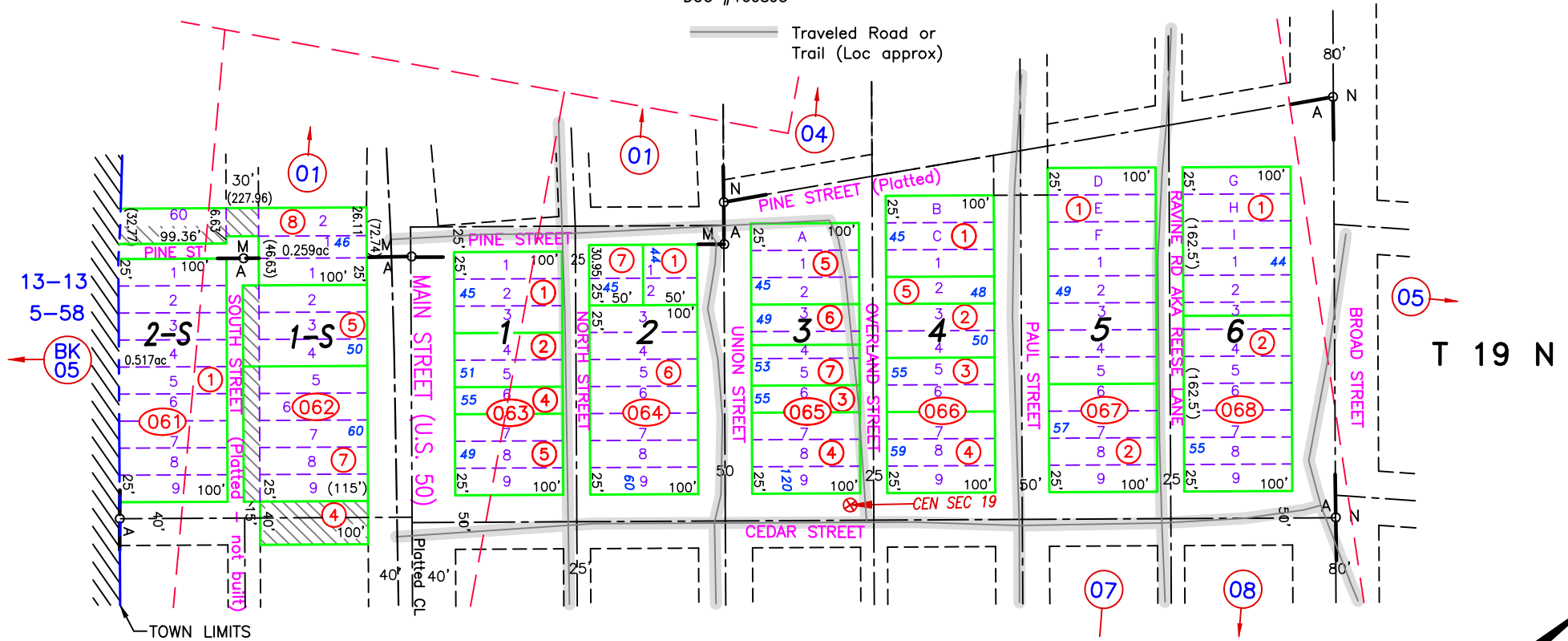


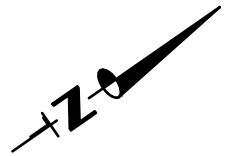
R 44 E

A Portion of Section 19

A-TOWN OF AUSTIN
N-NORTHERN ADDITION
M-MARSHALL TRACT
DOC #160895



NOTE:
THIS PLAT IS FOR ASSESSMENT USE ONLY, AND DOES NOT REPRESENT A SURVEY. NO LIABILITY IS ASSUMED AS TO THE ACCURACY OF THE DATA DELINEATED HEREON. USE OF THIS PLAT FOR OTHER THAN ASSESSMENT PURPOSES IS FORBIDDEN UNLESS APPROVED BY THE DEPT. OF TAXATION, DIVISION OF ASSESSMENT STANDARDS.



(M) INDICATES CAD MEASURED

REVISED BOUNDARY FOR 001-062-08, DOC #258558, 06/18/22 NJW
REVIEWED AND REVISED MINING CLAIM LOCATIONS, 06/18/22 NJW

Austin LANDER COUNTY