




# 01-04 ZONING MAP

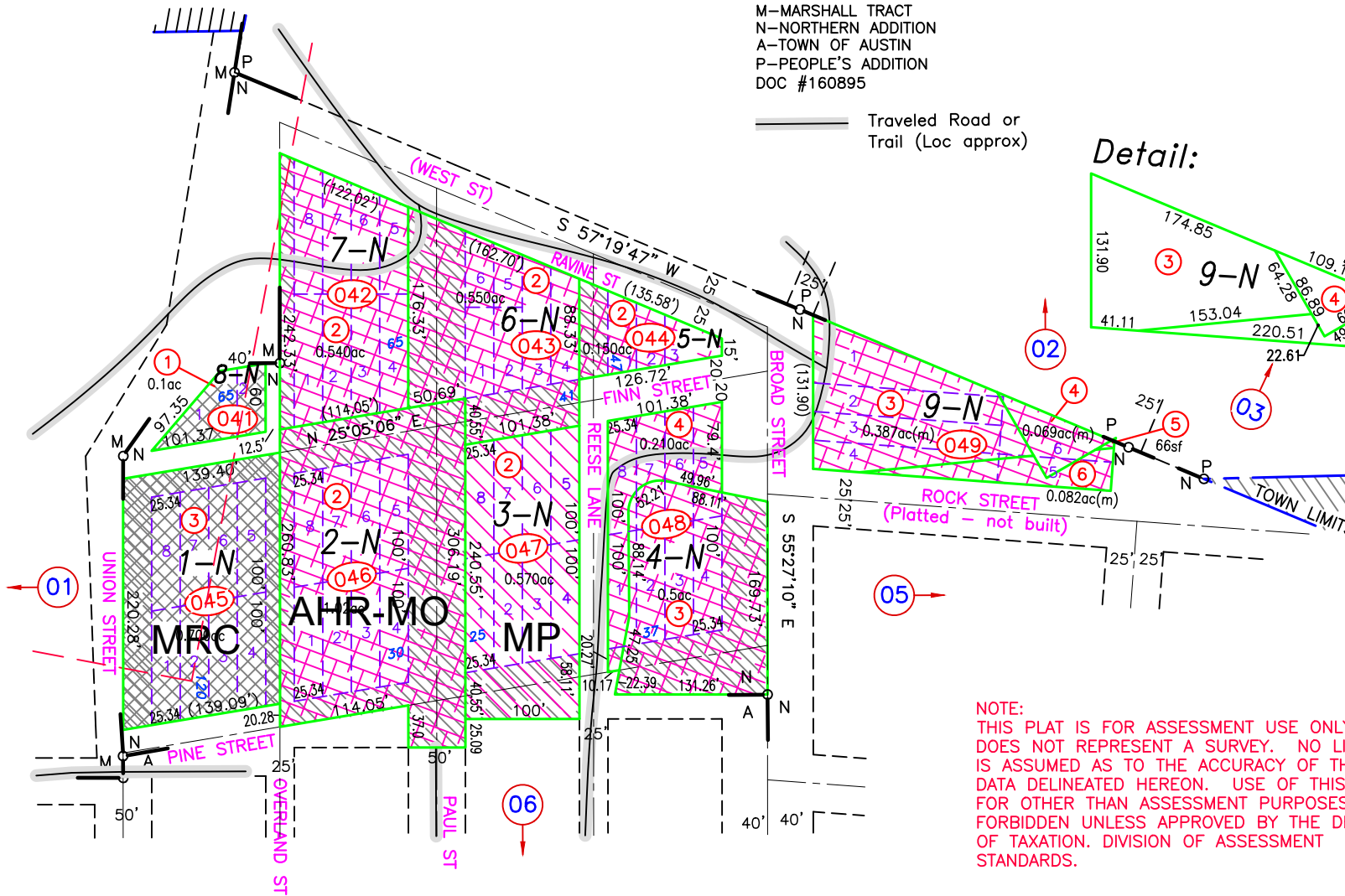
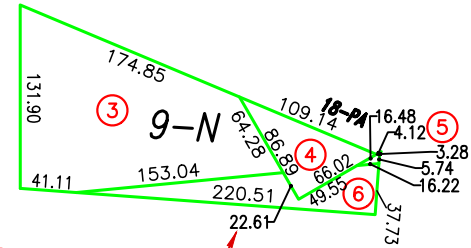
## R 44 E A Portion of NW 1/4 Section 19

M—MARSHALL TRACT  
N—NORTHERN ADDITION  
A—TOWN OF AUSTIN  
P—PEOPLE'S ADDITION  
DOC #160895

— Traveled Road or Trail (Loc approx)

-  MRC  
MANUFACTURED HOUSING,  
RESIDENTIAL, COMMERCIAL
-  MP  
MOBILE HOME PARK
-  AHR-MO  
AUSTIN HISTORICAL  
RESIDENTIAL W/ MANUF.  
HOUSING OVERLAY

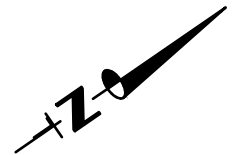
Detail:



T 19 N

NOTE:  
THIS PLAT IS FOR ASSESSMENT USE ONLY, AND DOES NOT REPRESENT A SURVEY. NO LIABILITY IS ASSUMED AS TO THE ACCURACY OF THE DATA DELINEATED HEREON. USE OF THIS PLAT FOR OTHER THAN ASSESSMENT PURPOSES IS FORBIDDEN UNLESS APPROVED BY THE DEPT. OF TAXATION. DIVISION OF ASSESSMENT STANDARDS.

(M) INDICATES CAD MEASURED



ZONING CHANGE 1-047-02 TO MP, DOC #251561 6/26/17 NJW  
REVIEWED AND REVISED MINING CLAIM LOCATIONS,  
PARCELS SPLIT ALONG CLAIM BOUNDARIES, 001-049-02  
SPLIT TO 001-049-03/06, 06/17/22 NJW